



Southern Illinois University  
Carbondale  
**SCHOOL OF ARCHITECTURE**  
ARCHITECTURE 342: BUILDING TECHNOLOGY III

CONSULTANTS:

**SALUKI ENGINEERING, INC.**  
CARBONDALE, ILLINOIS

**MIDWEST MECHANICAL ENGINEERS**  
MARION, ILLINOIS

**NATIONAL FIRE PROTECTION, LLC**  
CARBONDALE, ILLINOIS

**SOUTHERN CONSULTING, INC.**  
MT. VERNON, ILLINOIS

**BANKING CENTER**

STUDENT:  
**RYAN KINPORTS**

PROJECT NO: ARC 342 - 002  
DRAWN BY: RYAN KINPORTS  
CHECKED BY: CHANYAKORN ADULSAK  
PROJECT MANAGER:  
PROJECT ARCHITECT:

COPYRIGHT: BOARD OF TRUSTEES  
SOUTHERN ILLINOIS UNIVERSITY

SHEET TITLE  
**FIRST FLOOR PLAN**

**A-102**  
SHEET OF

GENERAL NOTES:

- DRAWING NOT TO SCALE.
- ALL DIMENSIONS IN MILLIMETERS UNLESS NOTED OTHERWISE.
- INTERIOR WALL DIMENSIONS TO FACE OF STUDS.
- ALL DOOR RETURNS 100 MM UNLESS NOTED OTHERWISE OR DIMENSIONED.
- PROVIDE BLOCKING IN WALLS FOR ALL CASEWORK, FIXTURES, AND ACCESSORIES.
- ALL DRAINAGE RETURNS ROUTED THROUGH CENTRAL PLUMBING SHAFT.

SHEET KEYNOTES:

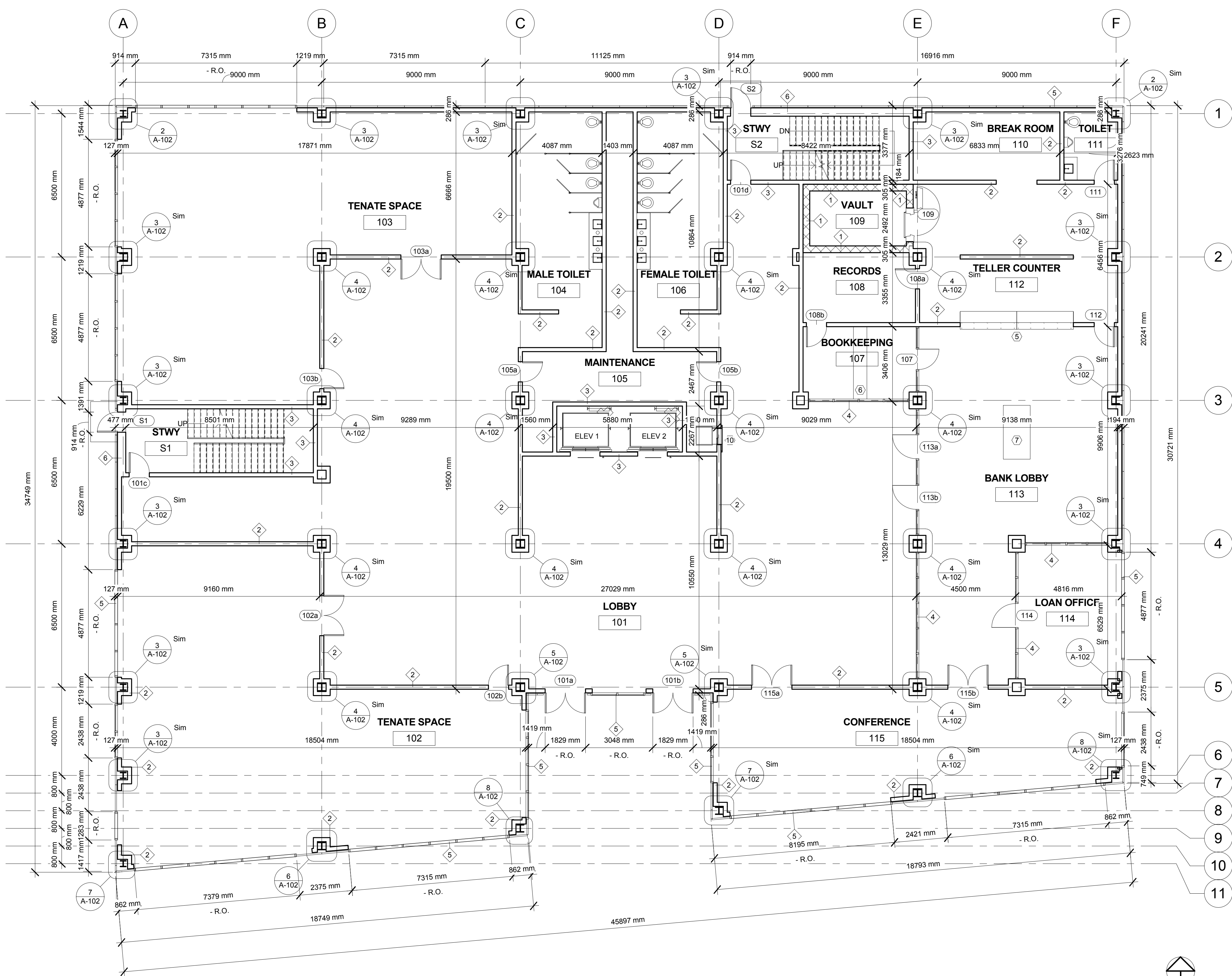
- DASHED LINE INDICATES ATRIUM OPENING ABOVE.
- SEMI-RECESSED FIRE EXTINGUISHER 1220 AFF.
- DF. TO. RIM 760 AFF.
- DF. TO. RIM 1015 AFF.
- TELLER COUNTER.
- CUSTOMER CHECK DESK.
- RECEPTION DESK.
- HANDRAIL 915 AFF. GUARDRAIL 1067 AFF.
- CONCRETE PADS SLOPE 1:20 AWAY FROM BUILDING.
- ATM.

REFERENCE KEYNOTES:

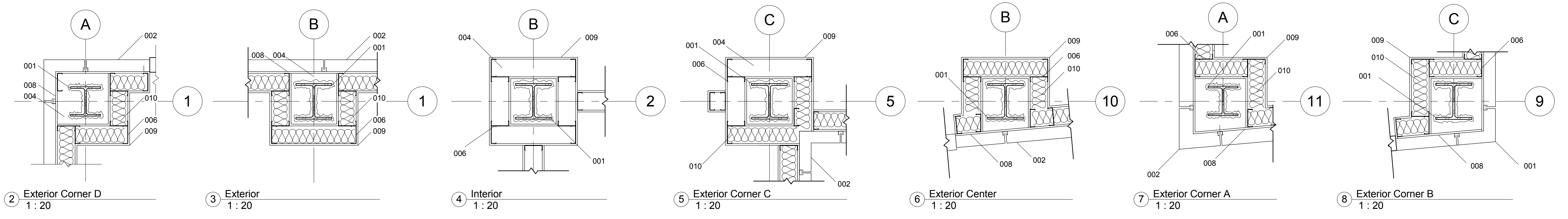
- 001: STRUCTURAL STEEL.
- 002: ALUCOBOND ON EXTERIOR SHEATHING.
- 003: VAPOR RETARDER.
- 004: AIR SPACE.
- 005: 1-HOUR FIRERATED GYPSUM WALL BOARD.
- 006: 152MM METAL STUD @ 406 MM O.C.
- 007: 355.6 MM METAL STUD @ 406 MM O.C.
- 008: EXTERIOR 16 MM GYPSUM BOARD.
- 009: 16 MM GYPSUM WALLBOARD.
- 010: INSULATION.

WALL SCHEDULE

MARK	DESCRIPTION	FIRE RATING (HOURS)	HEIGHT	NOTES
1	304.8 REINFORCED CAST IN PLACE CONCRETE.	2	FULL	-
2	1 LAYER 15 GWB TYPE X EA SIDE 152 STEEL STUDS @ 405 OC.	1	FULL	-
3	2 LAYERS 15 GWB TYPE X EACH SIDE 152 STEEL STUDS @ 405 OC.	2	FULL	-
4	152 ALUMINUM STOREFRONT SYSTEM.	1	CLNG	-
5	101.6 ALUCOBOND W/ DRAINAGE PLANE, 15.9 SHEATHING, 152 STEEL STUDS @ 405 O.C.	1	EXT	-
6	2 LAYERS 15 GWB TYPE X EACH SIDE 304.8 STEEL STUDS @ 405 OC.	2	FULL	-



1 First Floor  
1 : 100



CREATED FOR EDUCATIONAL USE ONLY. MW 5/15/14 14:20:20



Southern  
Illinois University  
Carbondale  
**SCHOOL OF  
ARCHITECTURE**

ARCHITECTURE 342: BUILDING TECHNOLOGY III

CONSULTANTS:

SALUKI ENGINEERING, INC.  
CARBONDALE, ILLINOIS

MIDWEST MECHANICAL ENGINEERS  
MARION, ILLINOIS

NATIONAL FIRE PROTECTION, LLC  
CARBONDALE, ILLINOIS

SOUTHERN CONSULTING, INC.  
MT. VERNON, ILLINOIS

**BANKING CENTER**

STUDENT:  
RYAN KINPORTS

PROJECT NO: ARC 342 - 002  
DRAWN BY: Author  
CHECKED BY: Checker  
PROJECT MANAGER:  
PROJECT ARCHITECT:

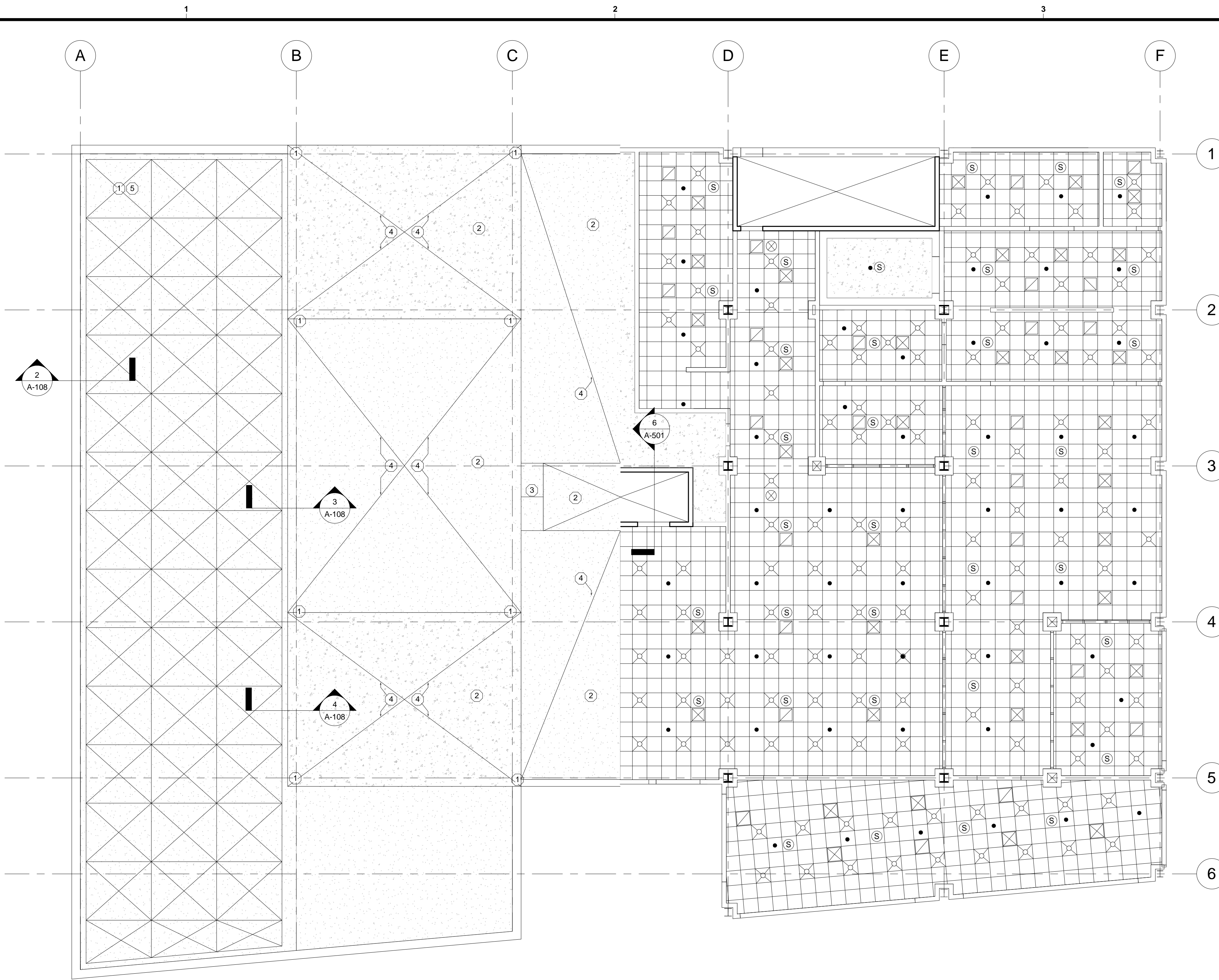
COPYRIGHT: BOARD OF TRUSTEES  
SOUTHERN ILLINOIS UNIVERSITY

SHEET TITLE

**ROOF & REFLECTED  
CEILING**

**A-108**

SHEET OF



1 REFLECTED CEILING & ROOF PLAN  
1 : 100

GENERAL SHEET NOTES:

- ALL DIMENSIONS IN MILLIMETERS UON
- ALL ROOF DRAINS CHANNEL TO GREY WATER TANKS
- GREEN ROOFS ARE SEMI-INTENSIVE

REFERENCE KEYNOTES:

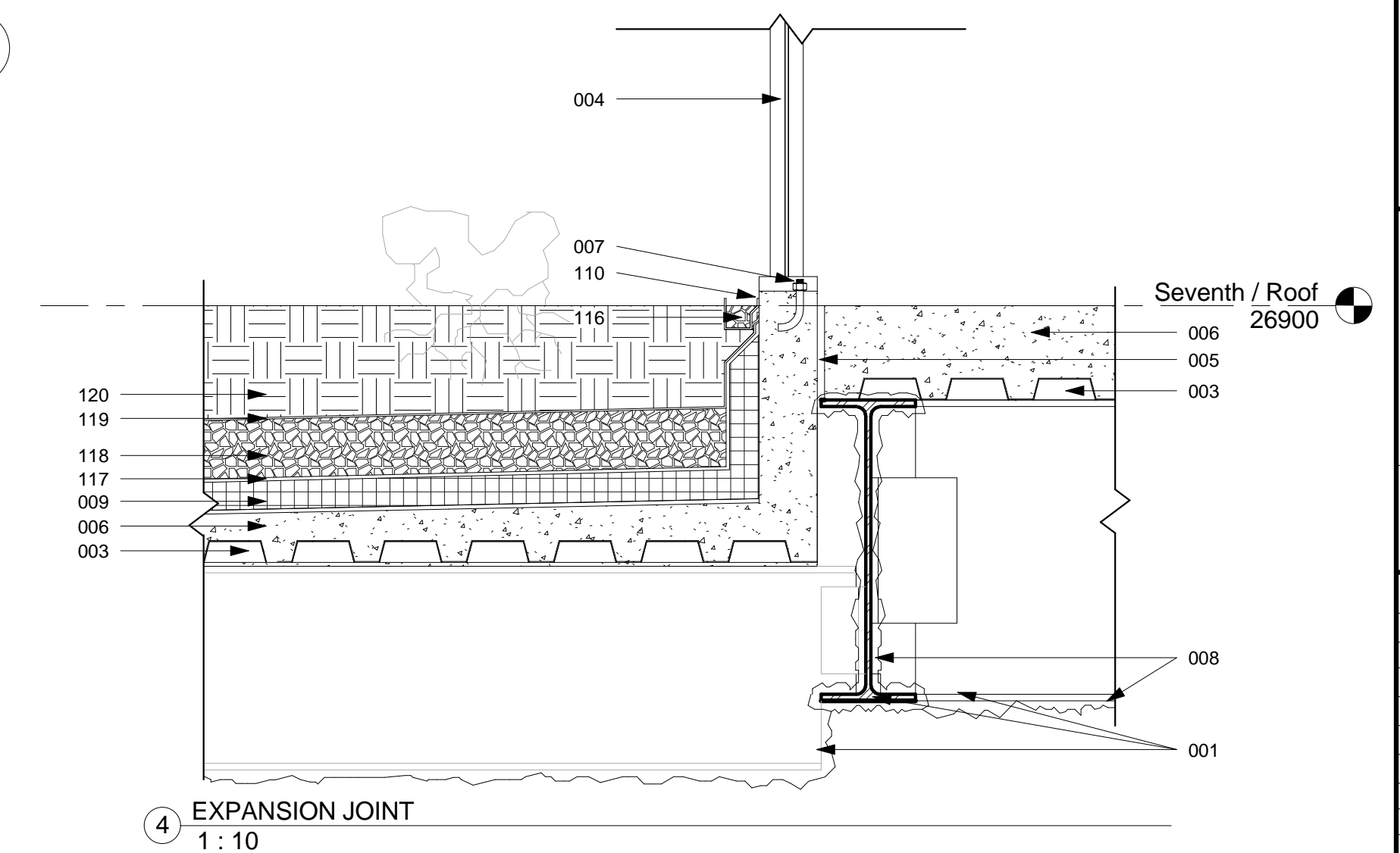
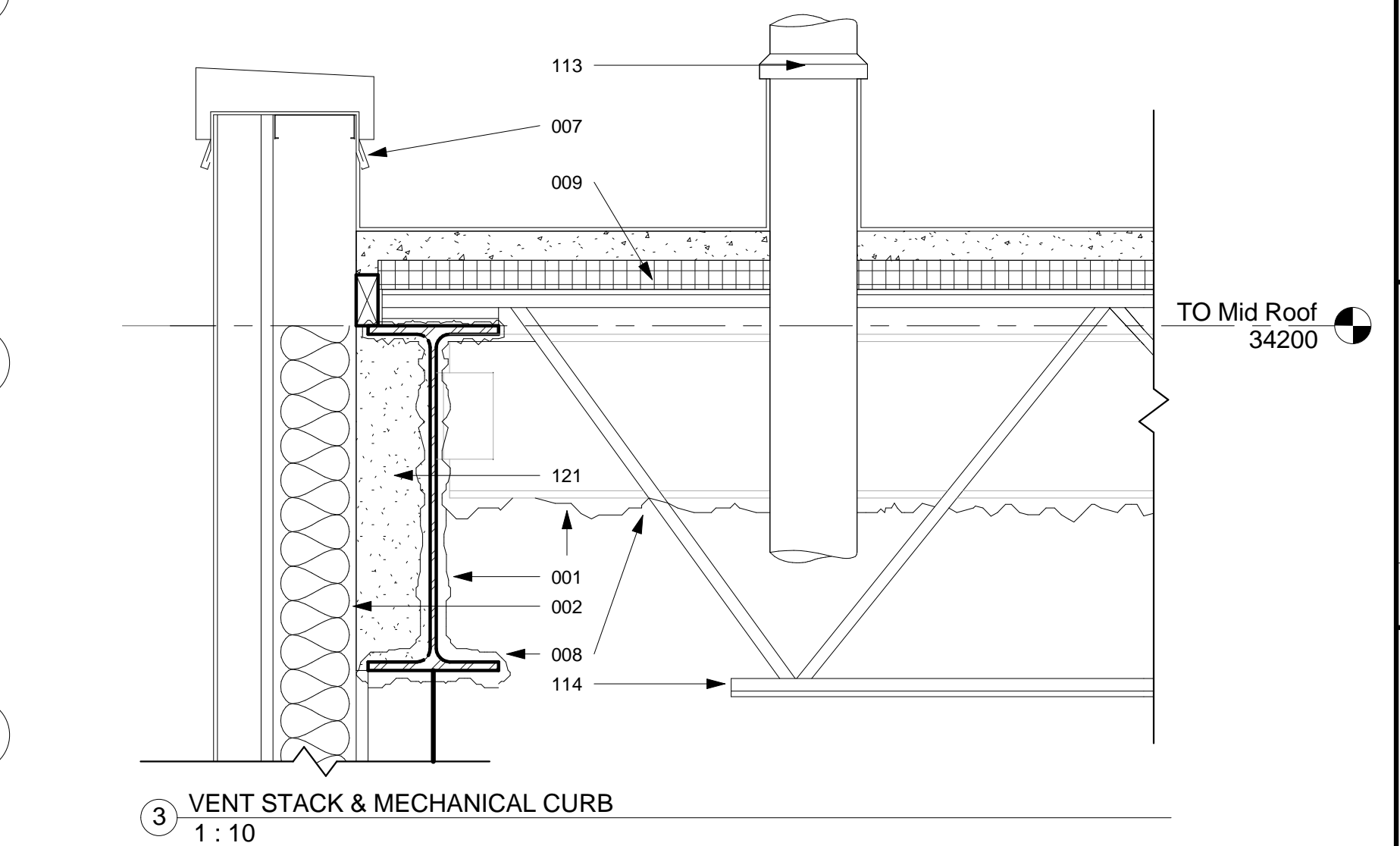
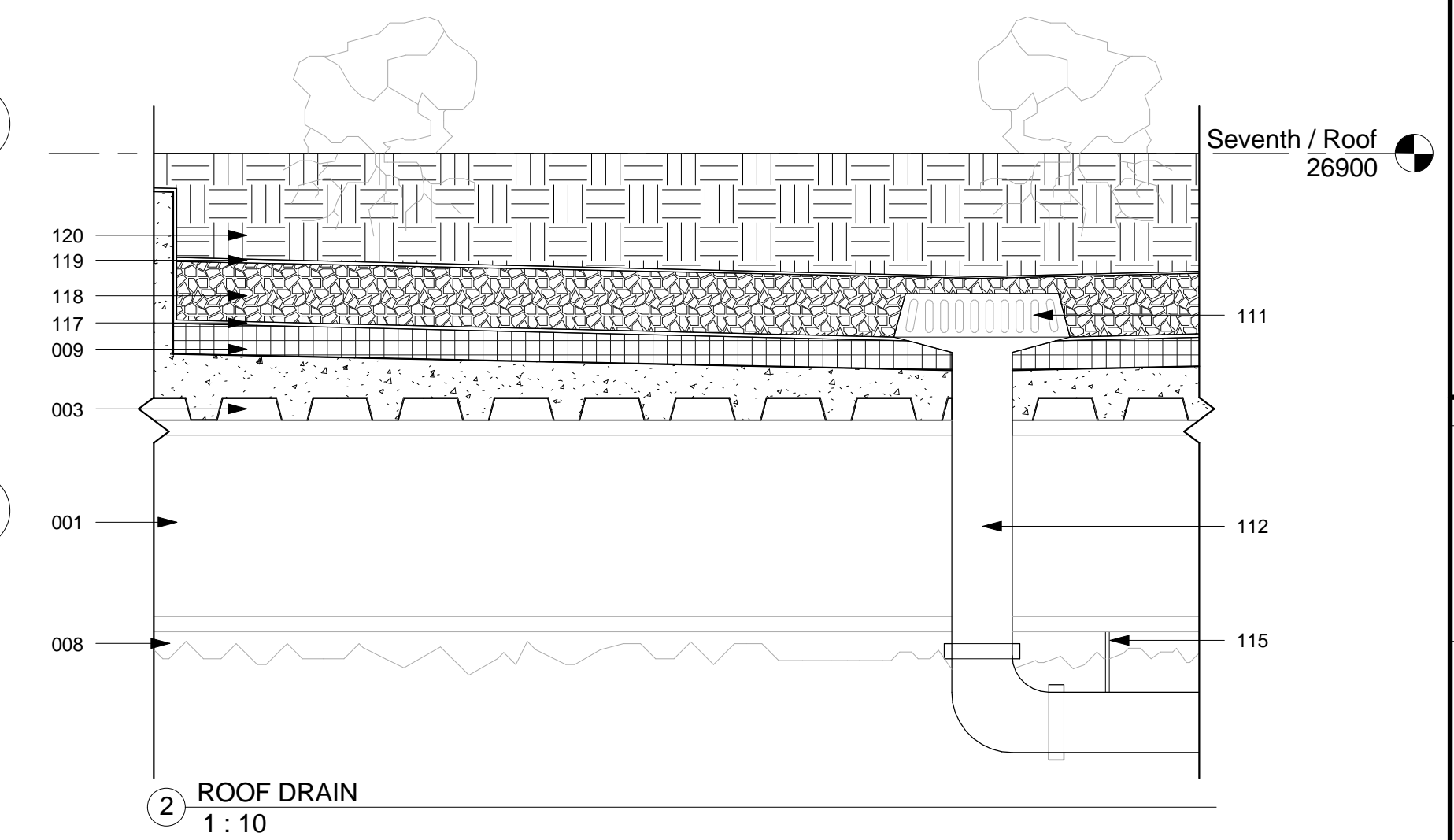
- |      |                             |
|------|-----------------------------|
| 001: | STEEL BEAM                  |
| 002: | BATT INSULATION             |
| 003: | STEEL DECK                  |
| 004: | GLASS CURTAIN WALL          |
| 005: | ISOLATION JOINT             |
| 006: | CAST-IN-PLACE CONCRETE      |
| 007: | ANCHOR BOLT                 |
| 008: | FIRE RESISTANT COATING      |
| 009: | RIGID INSULATION            |
| 110: | ALUMINIUM FLASHING          |
| 111: | ALUMINIUM DRAIN COVER       |
| 112: | DRAIN PIPE TO CENTRAL CHASE |
| 113: | STACK VENT                  |
| 114: | LH SERIES BAR JOIST         |
| 115: | SUSPENSION ROD              |
| 116: | GRAVEL                      |
| 117: | PROTECTION MAT              |
| 118: | GRANULAR DRAINAGE           |
| 119: | SEPARATION FABRIC           |
| 120: | EXTENSIVE SOIL MIX          |
| 121: | INSULATED FOAM              |

SHEET KEYNOTES:

- |   |                         |
|---|-------------------------|
| 1 | ROOF DRAIN              |
| 2 | LOW SLOPE MEMBRANE ROOF |
| 3 | CRICKET                 |
| 4 | RIDGE                   |
| 5 | VALLEY                  |

LEGEND:

- |   |                           |
|---|---------------------------|
| ○ | SPRINKLER HEAD            |
| ⊗ | EXIT SIGN                 |
| ⊙ | STROBE                    |
| ☐ | AIR RETURN                |
| ⊠ | AIR SUPPLY                |
| ⊞ | 610 X 610 FLORECENT LIGHT |





Southern Illinois University  
Carbondale  
**SCHOOL OF ARCHITECTURE**  
ARCHITECTURE 342: BUILDING TECHNOLOGY III

CONSULTANTS:

SALUKI ENGINEERING, INC.  
CARBONDALE, ILLINOIS

MIDWEST MECHANICAL ENGINEERS  
MARION, ILLINOIS

NATIONAL FIRE PROTECTION, LLC  
CARBONDALE, ILLINOIS

SOUTHERN CONSULTING, INC.  
MT. VERNON, ILLINOIS

**BANKING CENTER**

STUDENT:  
RYAN KINPORTS

PROJECT NO: ARC 342 - 002  
DRAWN BY: RYAN KINPORTS  
CHECKED BY: CHANYAKORN ADULSAK  
PROJECT MANAGER:  
PROJECT ARCHITECT:

COPYRIGHT: BOARD OF TRUSTEES  
SOUTHERN ILLINOIS UNIVERSITY

SHEET TITLE

TYPICAL WALL SECTION

**A-310**

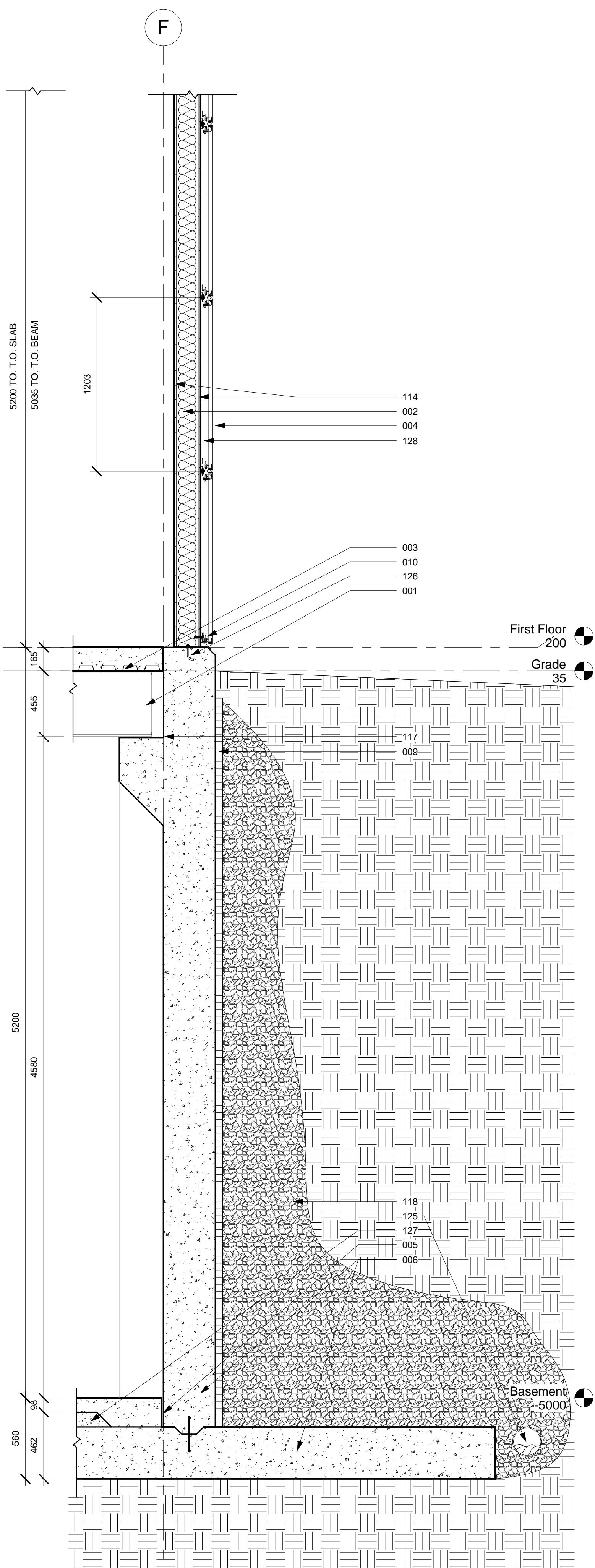
SHEET OF

GENERAL NOTES:

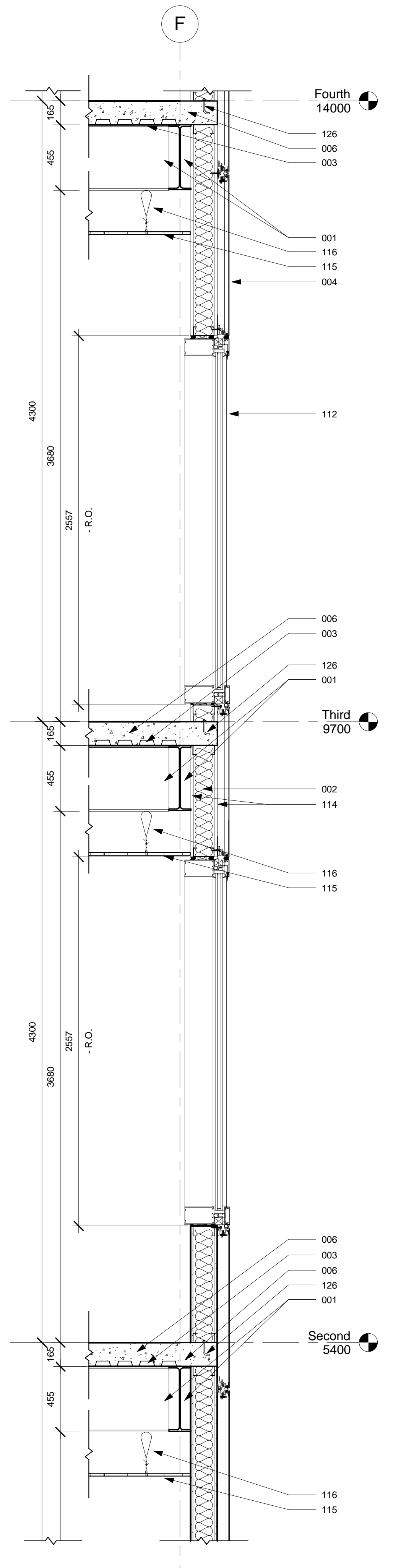
- DRAWING NOT TO SCALE.
- ALL DIMENSIONS IN MILLIMETERS UNLESS NOTED OTHERWISE.
- DRAINAGE FROM SEMI-INTENSIVE GREEN ROOF ROUTED TO GREY WATER STORAGE.

REFERENCE KEYNOTES:

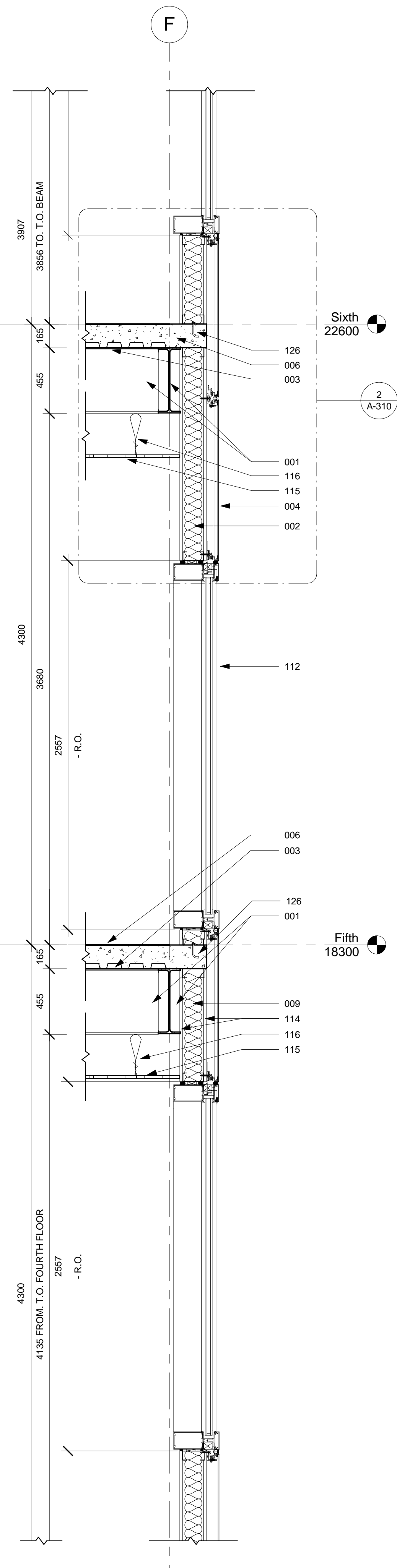
- 001: STEEL BEAM
- 002: BATT INSULATION
- 003: STEEL DECK
- 004: ALUCOBOND ON EXTERIOR SHEATHING
- 005: ISOLATION JOINT
- 006: CAST-IN-PLACE CONCRETE
- 007: ANCHOR BOLT
- 008: FIRE RESISTANT COATING
- 009: RIGID INSULATION
- 010: WEEPHOLE
- 011: ALUMINIUM FLASHING
- 012: ALUMINIUM FIXED WINDOW
- 013: NON-BEARING METAL STUD
- 014: GYPSUM BOARD
- 015: SUSPENDED ACOUSTICAL CEILING
- 016: SUSPENSION WIRE
- 017: BEARING PAD
- 018: GRAVEL
- 019: PROTECTION MAT
- 020: GRANULAR DRAINAGE
- 021: SEPARATION FABRIC
- 022: EXTENSIVE SOIL MIX
- 023: DUPONT SENTRYGLAS
- 024: ALUMINIUM CAP RAIL
- 025: 4" DRAIN TILE
- 026: ANCHOR BOLT
- 027: FILL SAND
- 028: AIR GAP



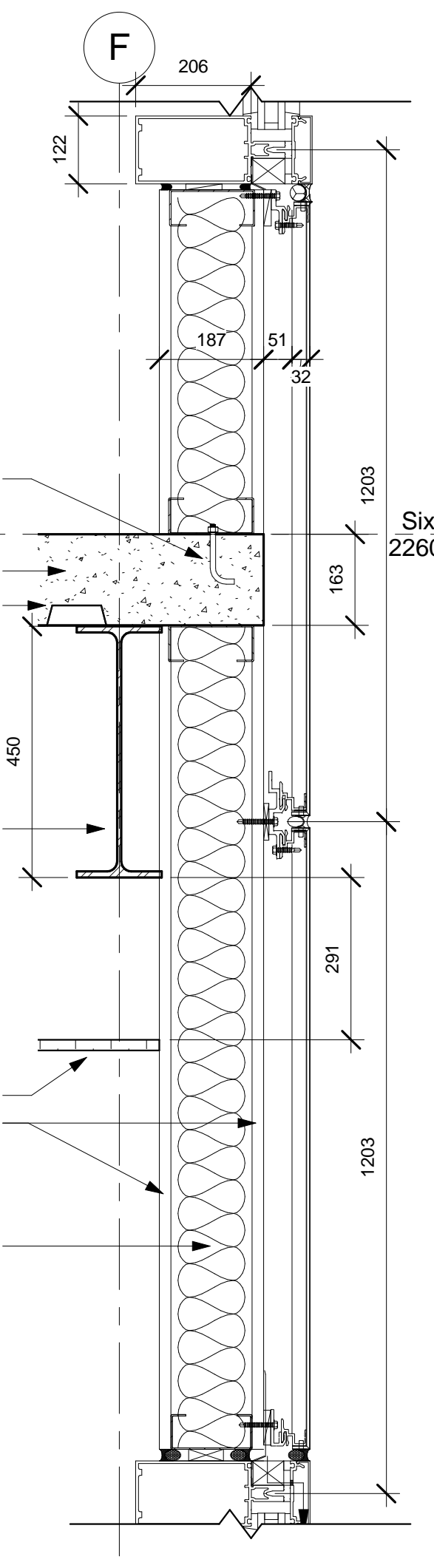
1 TYPICAL WALL SECTION  
1 : 20



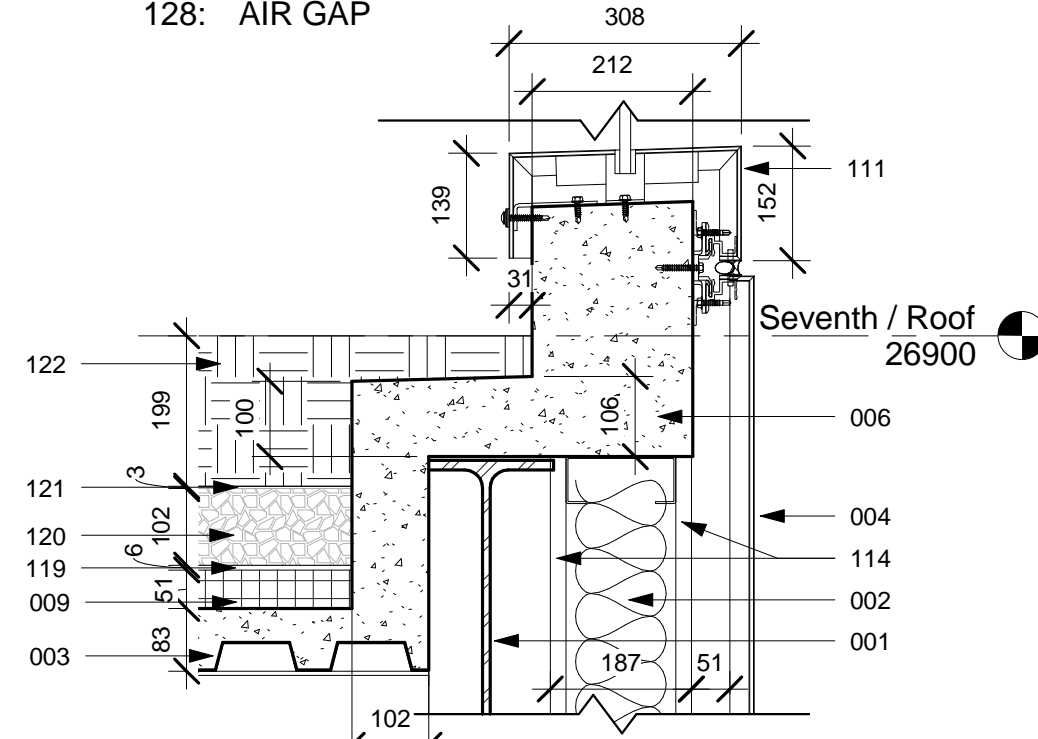
2 TYPICAL WALL SECTION  
2 : 20



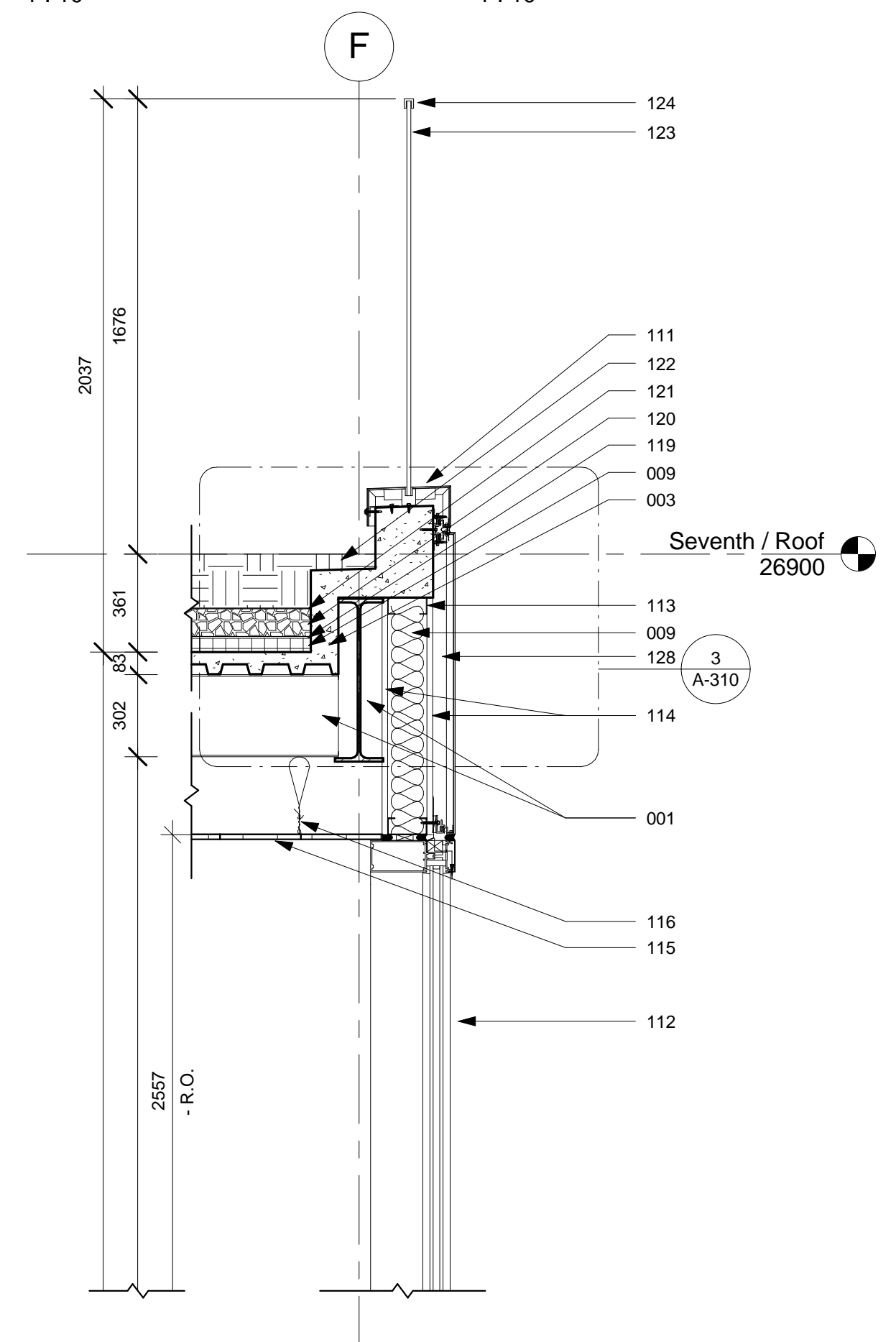
3 TYPICAL WALL SECTION  
3 : 20



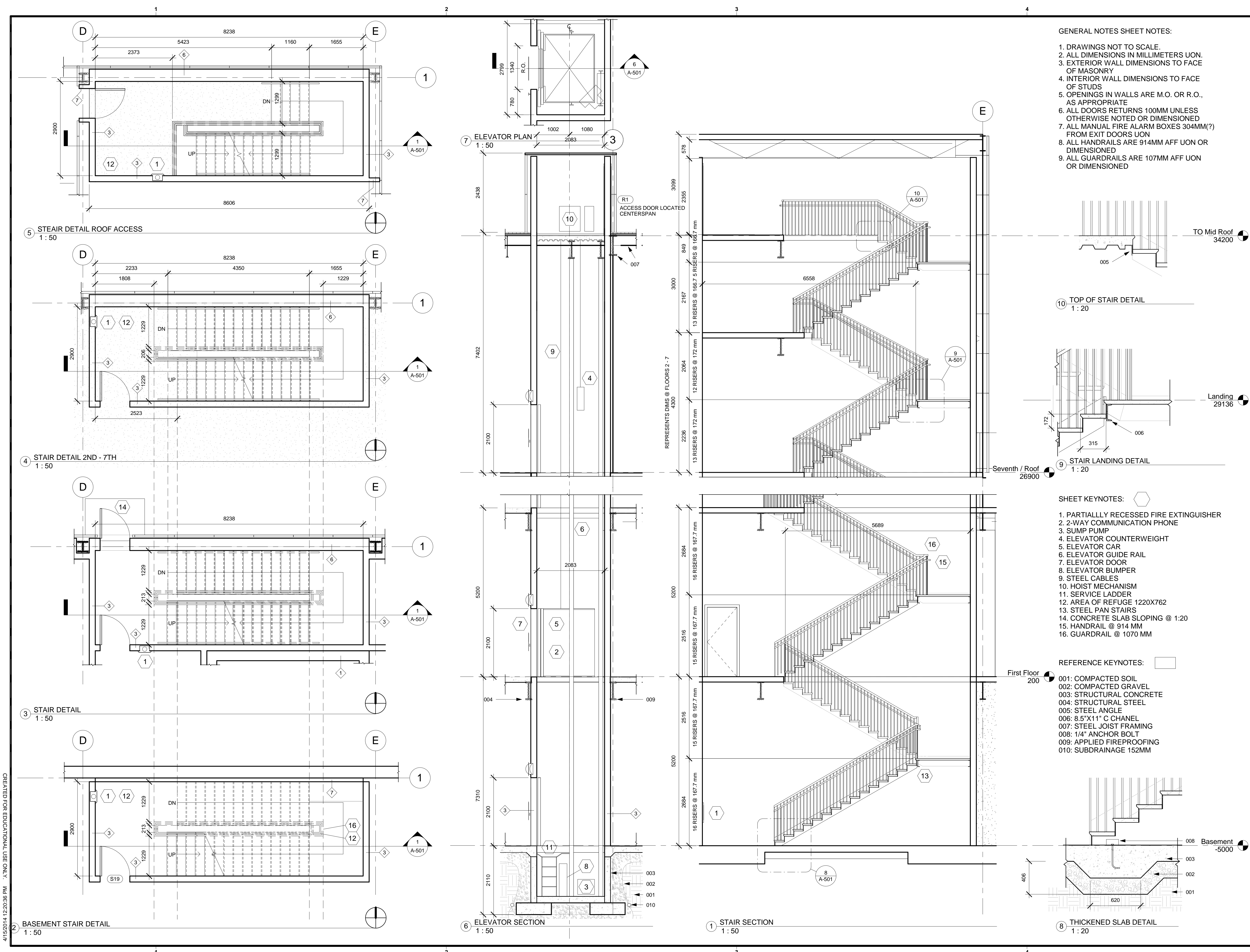
2 SIXTH FLOOR CALLOUT  
1 : 10



3 PARAPET CALLOUT  
1 : 10



4 TYPICAL WALL SECTION  
4 : 20



**Southern Illinois University**  
**Carbondale**  
**SCHOOL OF ARCHITECTURE**  
 ARCHITECTURE 342: BUILDING TECHNOLOGY III

CONSULTANTS:

**SALUKI ENGINEERING, INC.**  
 CARBONDALE, ILLINOIS

**MIDWEST MECHANICAL ENGINEERS**  
 MARION, ILLINOIS

**NATIONAL FIRE PROTECTION, LLC**  
 CARBONDALE, ILLINOIS

**SOUTHERN CONSULTING, INC.**  
 MT. VERNON, ILLINOIS

**BANKING CENTER**

STUDENT:  
**RYAN KINPORTS**

PROJECT NO: ARC 342 - 002  
 DRAWN BY: Ryan Kinports  
 CHECKED BY: CHANYAKORN ADULSAK  
 PROJECT MANAGER:  
 PROJECT ARCHITECT:

COPYRIGHT: BOARD OF TRUSTEES  
 SOUTHERN ILLINOIS UNIVERSITY

**BUILDING EGRESS SYSTEMS**

**A-501**

SHEET OF

4/15/2014 12:20:36 PM .\NTLX\... CREATED FOR EDUCATIONAL USE ONLY.