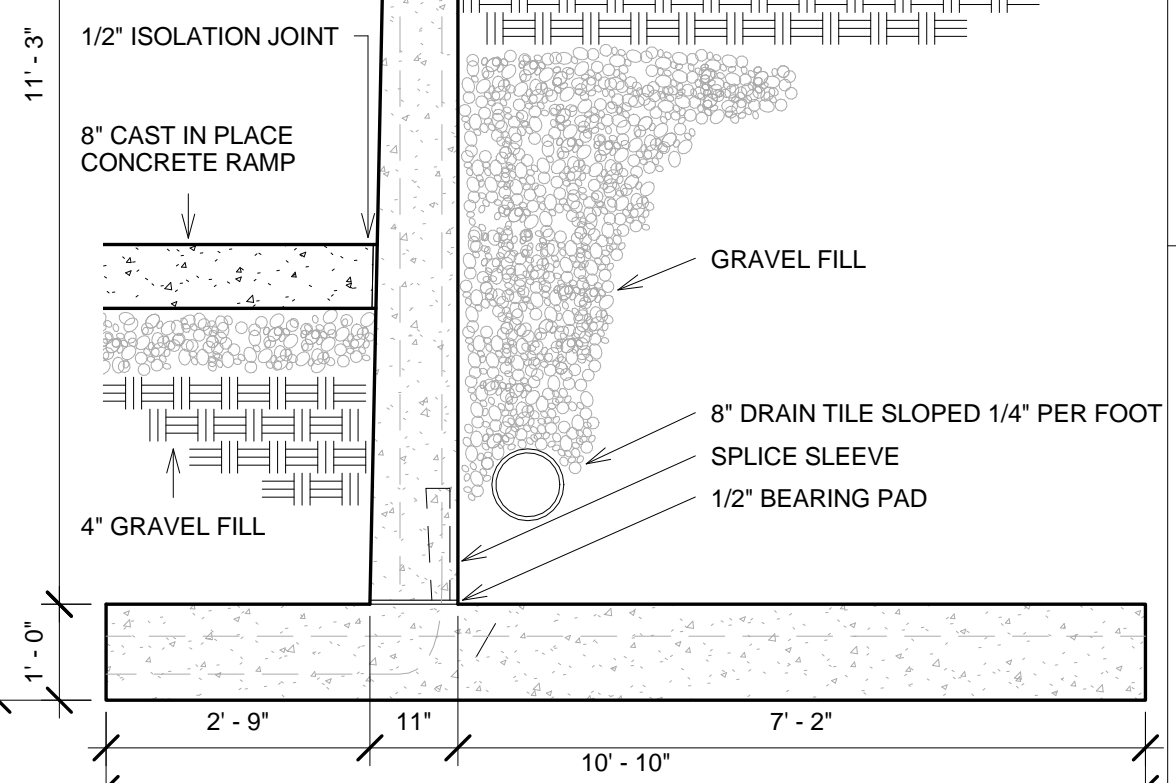
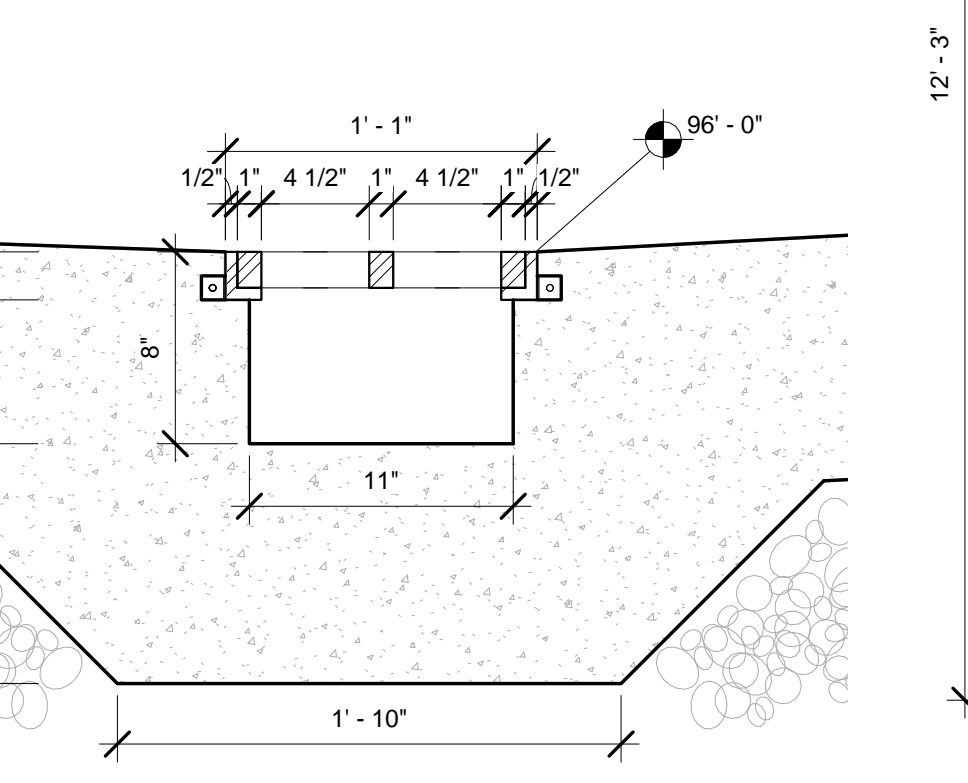
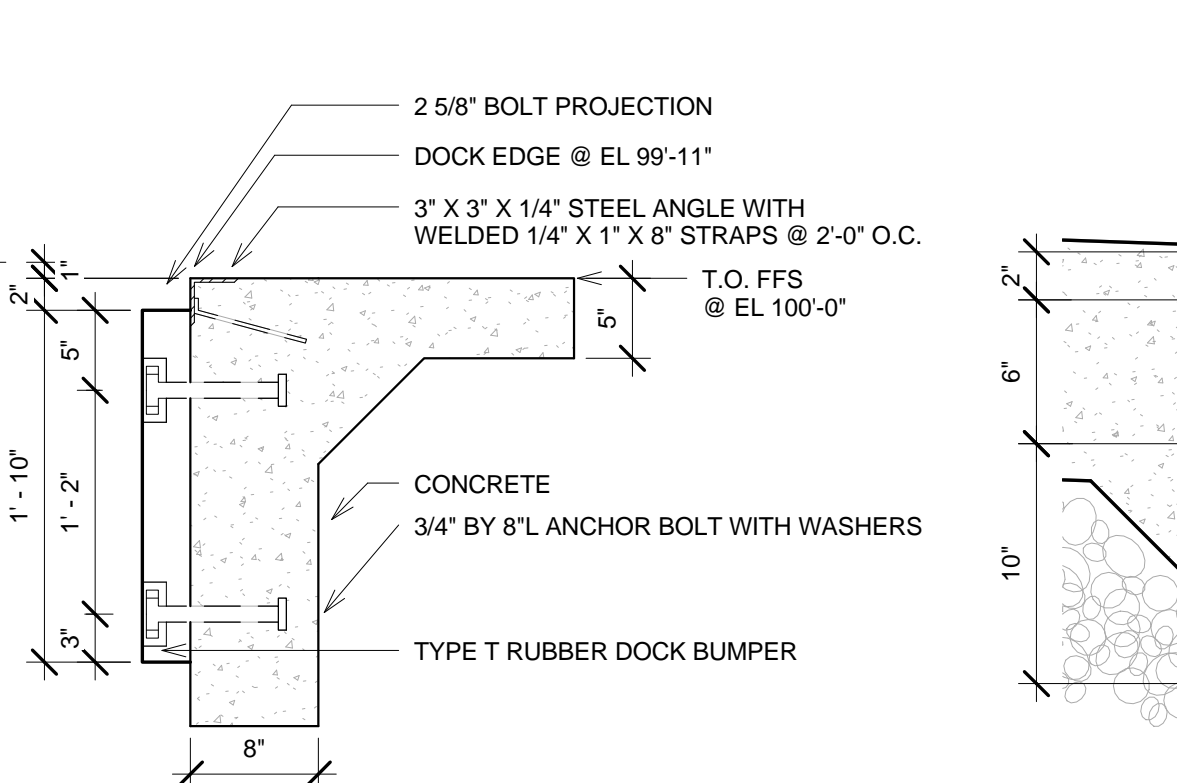


COLUMN FOOTING SCHEDULE					
TYPE	LENGTH	WIDTH	DEPTH	ELEVATION	REINFORCING
A	4'-0"	4'-0"	3'-0"	97'-4"	5 #4 REBAR BW
B	3'-9"	3'-9"	2'-6"	96'-4"	4 #4 REBAR BW
C	3'-9"	3'-9"	2'-9"	96'-4"	4 #4 REBAR BW

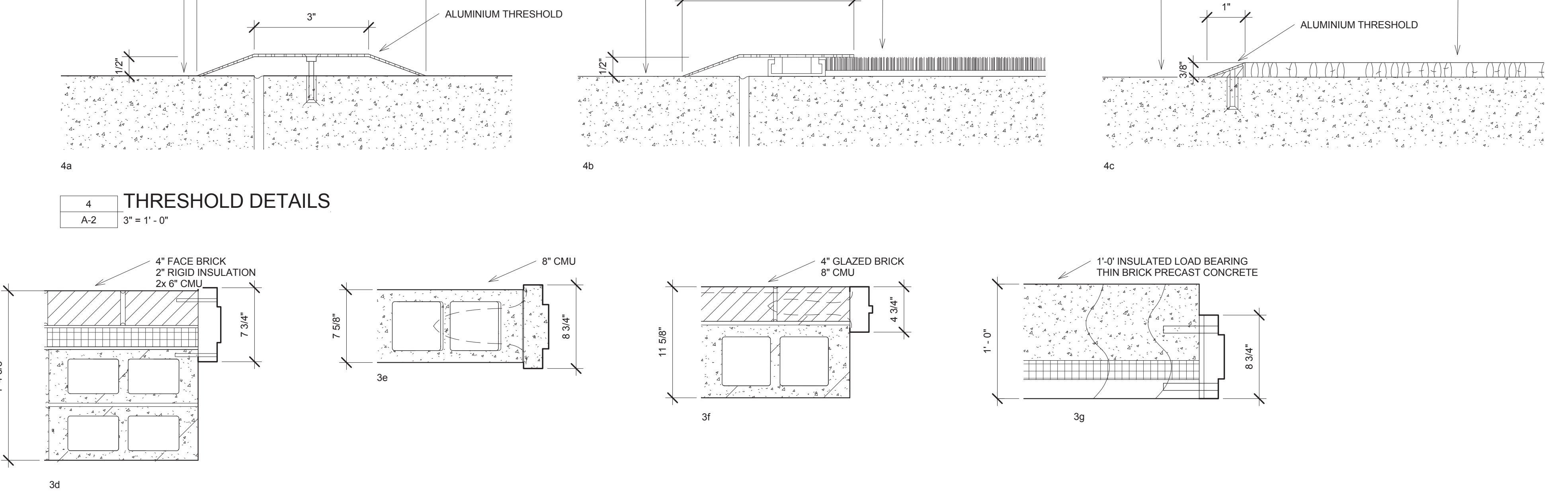
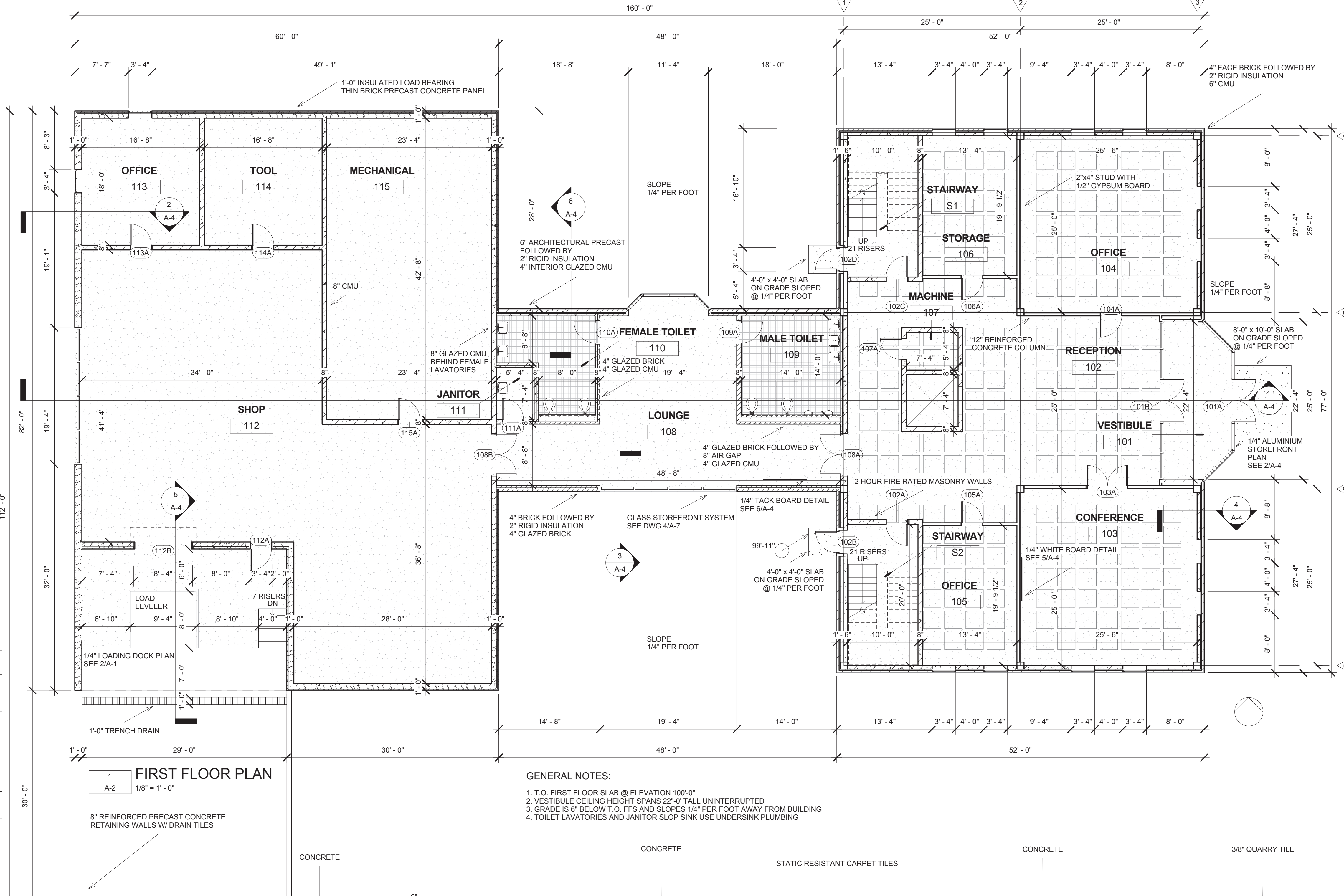
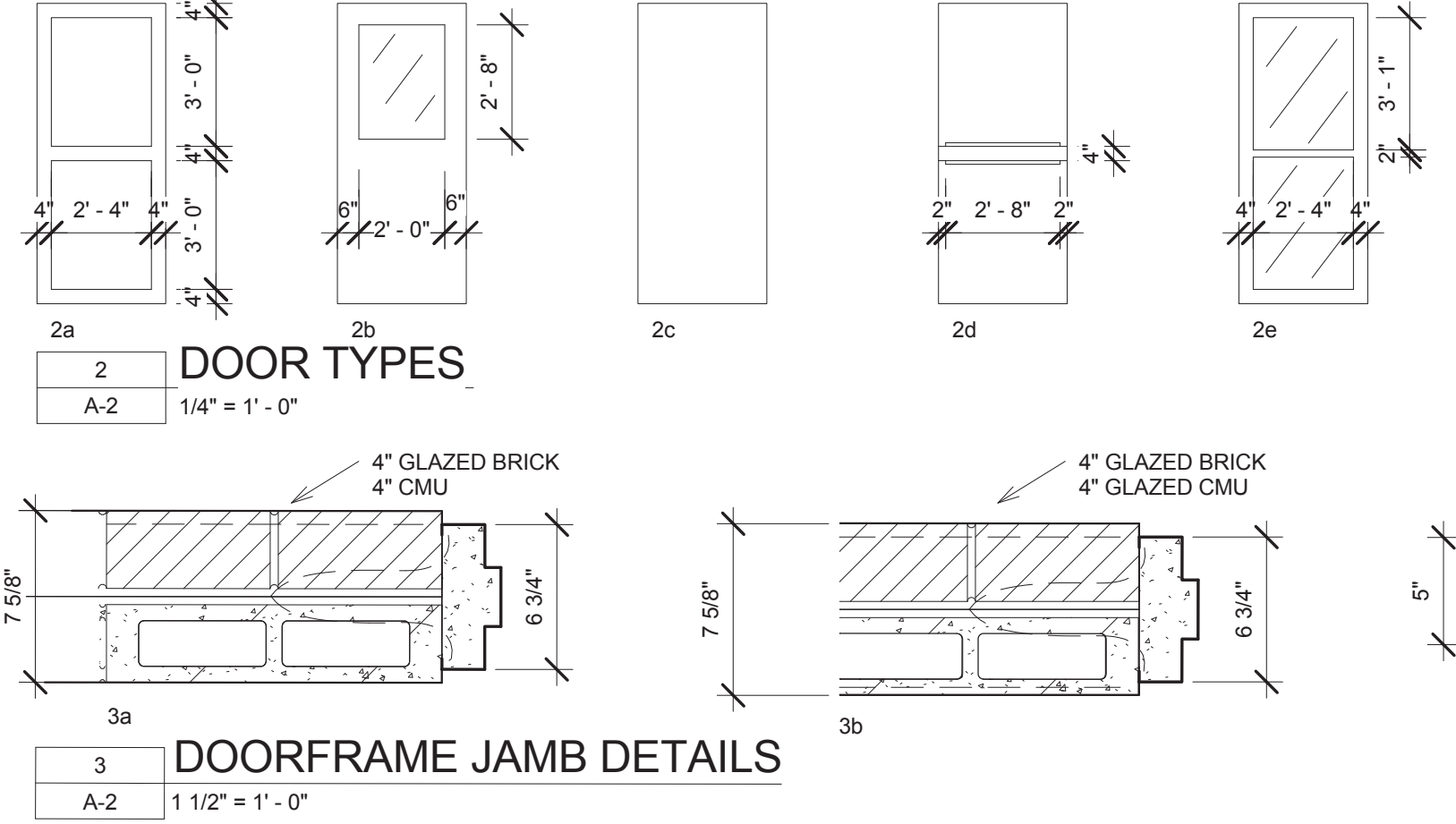
- GENERAL NOTES:**
- T.O. FOOTING @ 96'-4" EXCEPT WHERE NOTED
 - FFS ELEVATION 100'-0" EXCEPT WHERE NOTED
 - T.O. CONCRETE FOUNDATION WALL SHOWN CUT @ EL 100'-0"
 - 2" RIGID INSULATION ON INTERIOR OF ALL EXTERIOR WALLS
 - GRADE IS 8" BELOW FFS SLOPED 1/4" PER FOOT AWAY FROM BUILDING
 - ALL SLABS POURED OVER VAPOR BARRIER AND 4" GRAVEL FILL



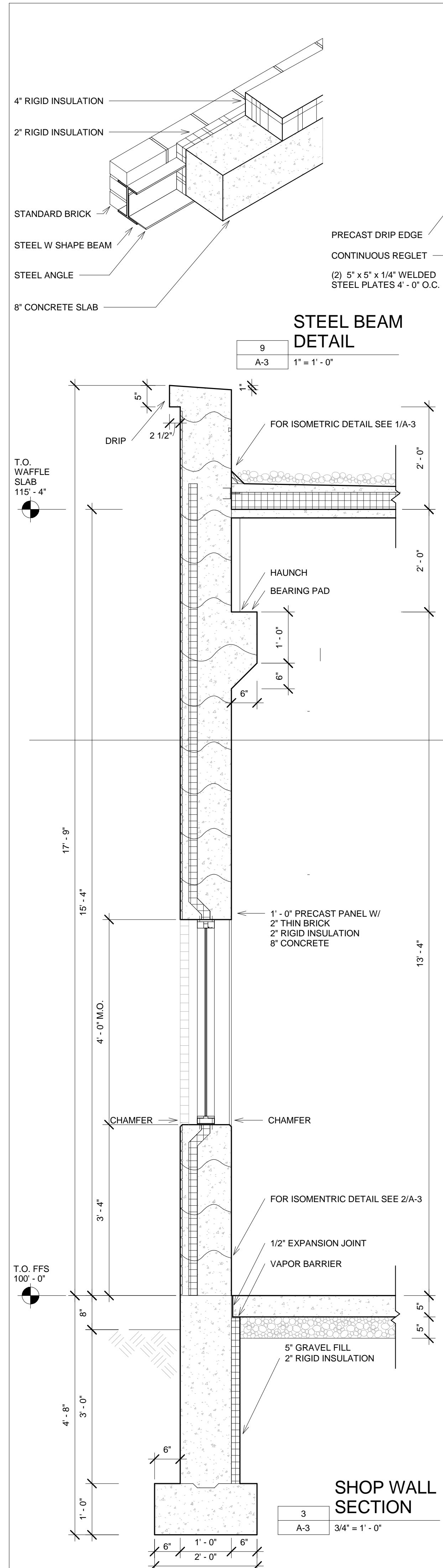
ROOM FINISH SCHEDULE												
NO.	ROOM NAME	FLOOR		BASES		WALLS		CEILING		CLG HT	DET SHT	REMARKS
		MATL	FIN	MATL	FIN.	MATL	FIN.	MATL	FIN			
101	VESTIBULE	CONC	S&V	V	-	BPL	-	CONC	-	22'-0"	-	-
102	RECEPTION	CAR.	-	V	P	GYP	P	CONC	-	10'-0"	-	-
103	CONFERENCE	CAR.	-	V	P	GYP	P	CONC	-	10'-0"	-	-
104	OFFICE	CAR.	-	V	P	CMU/GYP	P	CONC	-	10'-0"	2/A-3	-
105	OFFICE	CAR.	-	V	P	CMU/GYP	P	CONC	-	10'-0"	2/A-3	-
106	STORAGE	CONC	S&V	V	P	CMU	-	CONC	-	10'-0"	2/A-3	-
107	MACHINE	CONC	S&V	V	P	CMU	-	CONC	-	10'-0"	-	-
108	LOUNGE	CONC	S&V	V	-	GBPL	-	CONC	-	10'-0"	-	-
109	MALE TOILET	Q.T.	-	Q.T.	-	GCMU	-	GYP	-	8'-0"	2/A-4	-
110	FEMALE TOILET	Q.T.	-	Q.T.	-	GCMU	-	GYP	-	8'-0"	5/A-7	-
111	JANITOR	CONC	S&V	V	P	CMU	-	CONC	-	10'-0"	-	-
112	SHOP	CONC	S&V	V	P	CMU	-	CONC	-	14'-8"	-	-
113	OFFICE	CAR.	-	V	P	CMU	-	CONC	-	14'-8"	-	-
114	TOOL	CONC	S&V	V	P	CMU	-	CONC	-	14'-8"	2/A-8	-
115	MECHANICAL	CONC	S&V	V	P	CMU	-	CONC	-	14'-8"	2/A-3	-
201	UPSTAIRS	CAR.	-	V	P	GYP	P	CONC	-	10'-0"	2/A-3	-
S1	STAIRWAY	CONC	S&V	V	P	CMU	-	CONC	-	22'-0"	-	-
S2	STAIRWAY	CONC	S&V	V	P	CMU	-	CONC	-	22'-0"	-	-

DOOR SCHEDULE													
NO.	TYPE	W	HT	T	DOOR				DOOR FRAME				REMARKS
					CON.	MATL	FIN.	MATL	FIN.	DET NO.	LINTEL	THRESH.	
101A	2e	[2] 3'-0"	7'-2"	1 3/4"	-	-	-	ALM	-	3h/A-2	-	4a/A-2	-
101B	2e	[2] 3'-0"	7'-2"	1 3/4"	-	-	-	ALM	-	3h/A-2	-	4a/A-2	-
102A	2d	3'-0"	7'-2"	1 3/4"	HC	MET	P	STL	P	3e/A-2	L6	4a/A-2	-
102B	2d	3'-0"	7'-2"	1 3/4"	HC	MET	P	STL	P	3d/A-2	L7	4a/A-2	-
102C	2d	3'-0"	7'-2"	1 3/4"	HC	MET	P	STL	P	3e/A-2	L6	4a/A-2	-
102D	2d	3'-0"	7'-2"	1 3/4"	HC	MET	P	STL	P	3d/A-2	L7	4a/A-2	-
103A	2a	[2] 3'-0"	7'-2"	1 3/4"	SC	WD	S&V	STL	P	3c/A-2	L5	4b/A-2	-
104A	2a	3'-0"	7'-2"	1 3/4"	SC	WD	S&V	STL	P	3c/A-2	L4	4b/A-2	-
105A	2a	3'-0"	7'-2"	1 3/4"	SC	WD	S&V	STL	P	3c/A-2	L4	4b/A-2	-
106A	2a	3'-0"	7'-2"	1 3/4"	SC	WD	S&V	STL	P	3c/A-2	L4	-	-
107A	2d	3'-0"	7'-2"	1 3/4"	HC	MET	P	STL	P	3e/A-2	L4	-	-
108A	2a	[2] 3'-0"	7'-2"	1 3/4"	SC	WD	S&V	STL	P	3h/A-2	L8	4a/A-2	-
108B	2b	[2] 3'-0"	7'-2"	1 3/4"	HC	MET	P	STL	P	3a/A-2	L2	4a/A-2	-
109A	2c	3'-0"	7'-2"	1 3/4"	HC	WD	S&V	STL	P	3b/A-2	L3	4c/A-2	-
110A	2c	3'-0"	7'-2"	1 3/4"	HC	WD	S&V	STL	P	3b/A-2	L3	4c/A-2	-
111A	2d	3'-0"	7'-2"	1 3/4"	HC	MET	P	STL	P	3a/A-2	L1	4a/A-2	-
112A	2c	3'-0"	7'-2"	1 3/4"	HC	MET	P	STL	P	3g/A-2	L9	4a/A-2	-
112B	2f	8'-0"	8'-0"	2"	-	-	-	MET	-	STL	P	3g/A-2	-
113A	2c	3'-0"	7'-2"	1 3/4"	HC	MET	P	STL	P	3e/A-2	L6	4a/A-2	-
114A	2c	3'-0"	7'-2"	1 3/4"	HC	MET	P	STL	P	3e/A-2	L6	4a/A-2	-
115A	2c	3'-0"	7'-2"	1 3/4"	HC	MET	P	STL	P	3e/A-2	L6	4a/A-2	-
201A	2d	3'-0"	7'-2"	1 3/4"	HC	MET	P	STL	P	3e/A-2	L6	4a/A-2	-
201B	2d	3'-0"	7'-2"	1 3/4"	HC	MET	P	STL	P	3e/A-2	L6	4a/A-2	-

LOOSE LINTEL SCHEDULE					
MARK	MATERIAL	SECTION	ROUGH OPENING	BEARING AT EACH END	REMARKS
L1	CMU/STEEL		REINFORCED CMU W/ 3-1/2 x 3-1/2 x 1/4	3'-4"	8"
L2	CMU/STEEL		REINFORCED CMU W/ 6 x 3-1/2 x 1/4	6'-4"	8"
L3	CMU/STEEL		REINFORCED CMU W/ 3-1/2 x 3-1/2 x 1/4	3'-4"	8"
L4	WOOD		2x4 DOUBLE HEADER	3'-4"	1 1/2"
L5	WOOD		2x4 DOUBLE HEADER	6'-4"	1 1/2"
L6	CMU		REINFORCED CMU W/ 2 #3 REBARS	3'-4"	8"
L7	CMU		2 REINFORCED CMU W/ 2 #3 REBARS 1 3-1/2 x 3-1/2 x 1/4	3'-4"	8"
L8	CMU/STEEL		REINFORCED CMU W/ 6 x 3-1/2 x 1/4	6'-4"	8"

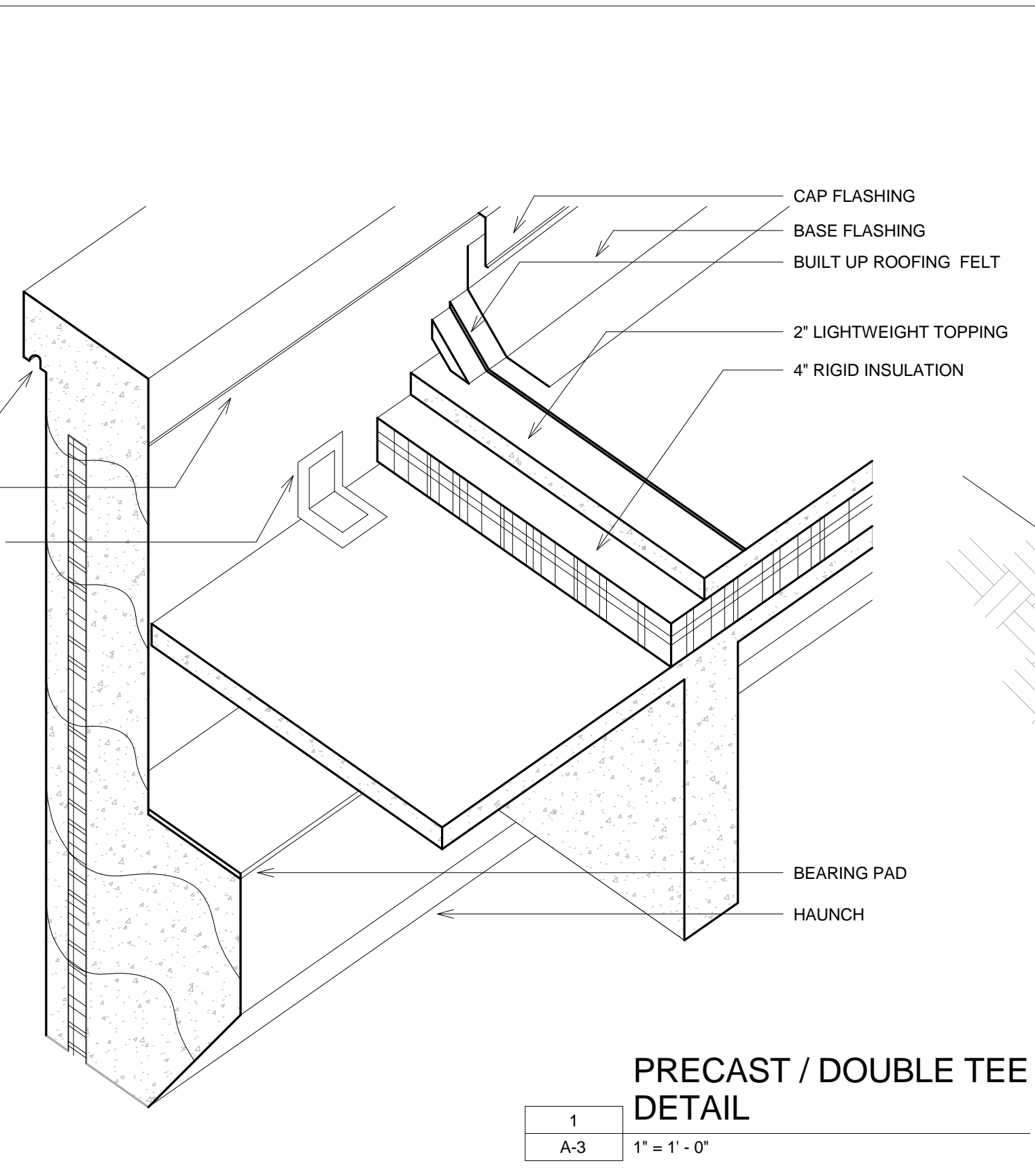


REVISION & DATE	DATE	SHEET TITLE	JOB NO.	CHECKED BY:	DRAWN BY:
	9/12/13	FIRST FLOOR PLAN ROOM SCHEDULE DOOR SCHEDULE LINTEL SCHEDULE DOORFRAME JAMB DETAILS THRESHOLD DETAILS	02	NL	RK
RYAN KINPORTS MR. NORM LACH SOUTHERN ILLINOIS PRECAST CONCRETE INSTITUTE SPRINGFIELD, IL 62712 SIPCI					
SCHOOL OF ARCHITECTURE SOUTHERN ILLINOIS UNIVERSITY BUILDING TECHNOLOGY II ARC 341 SECTION 002					
SHEET NO.					
A-2					
OF 8 SHEETS					



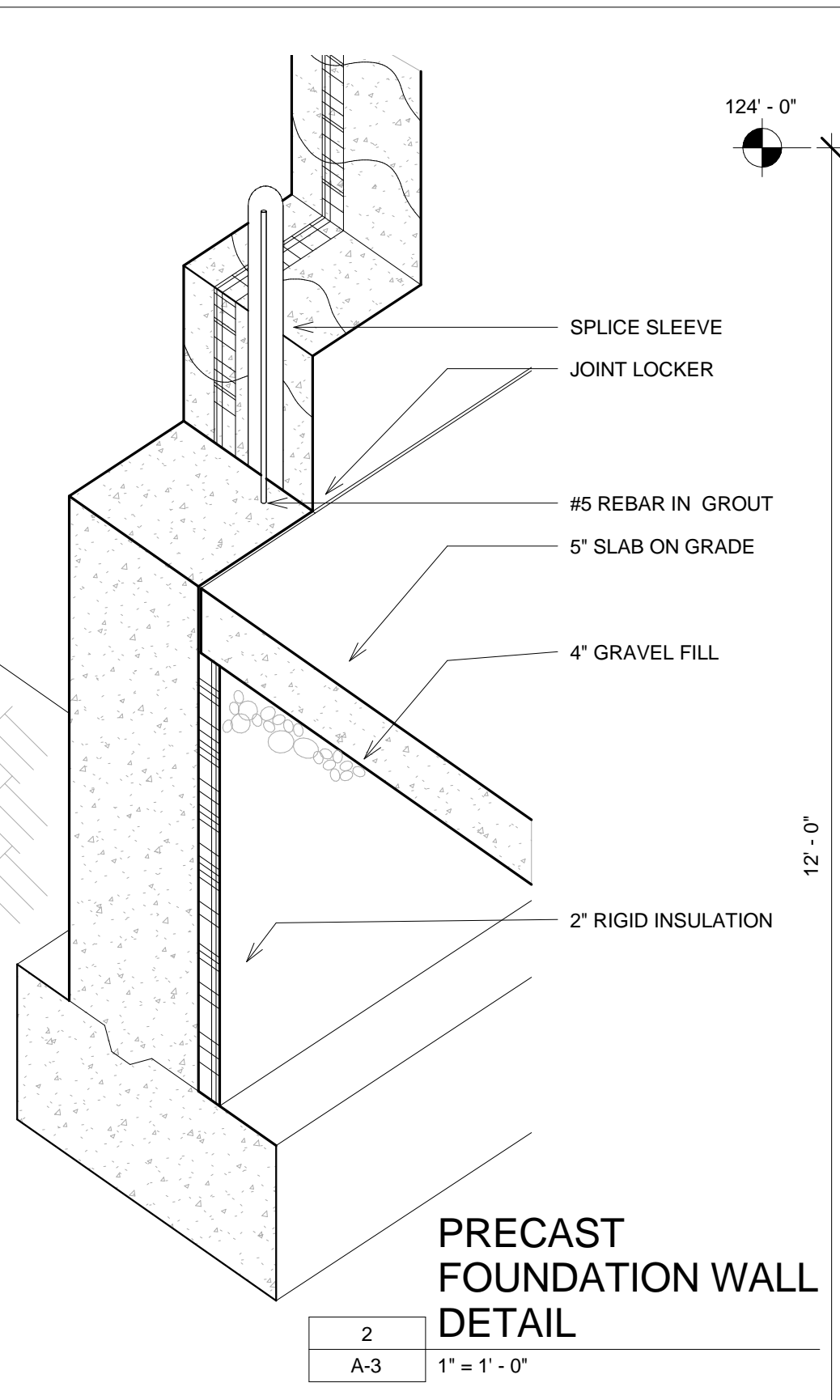
**STEEL BEAM
DETAIL**

9
A-3
1" = 1'-0"



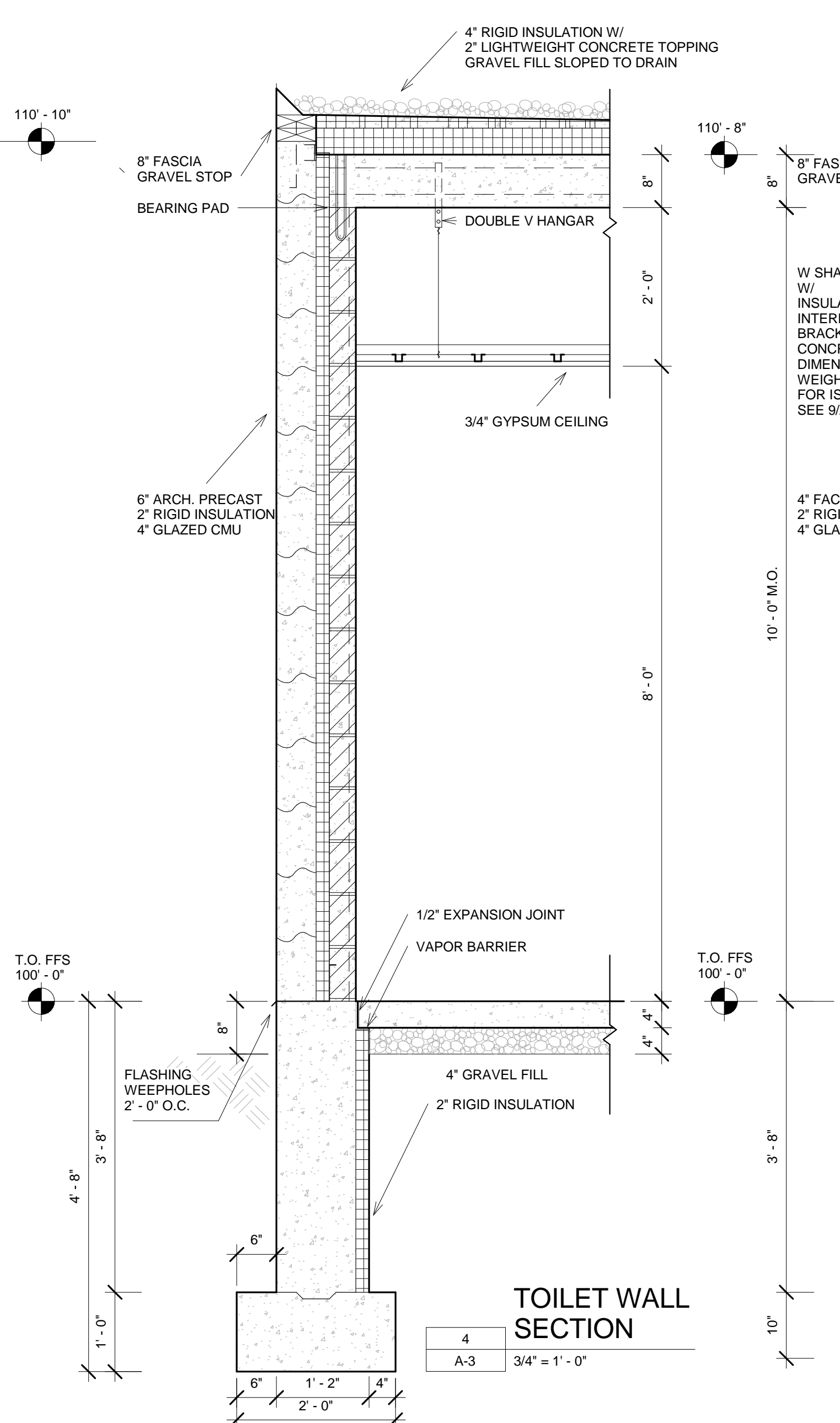
**PRECAST / DOUBLE TEE
DETAIL**

1
A-3
1" = 1'-0"



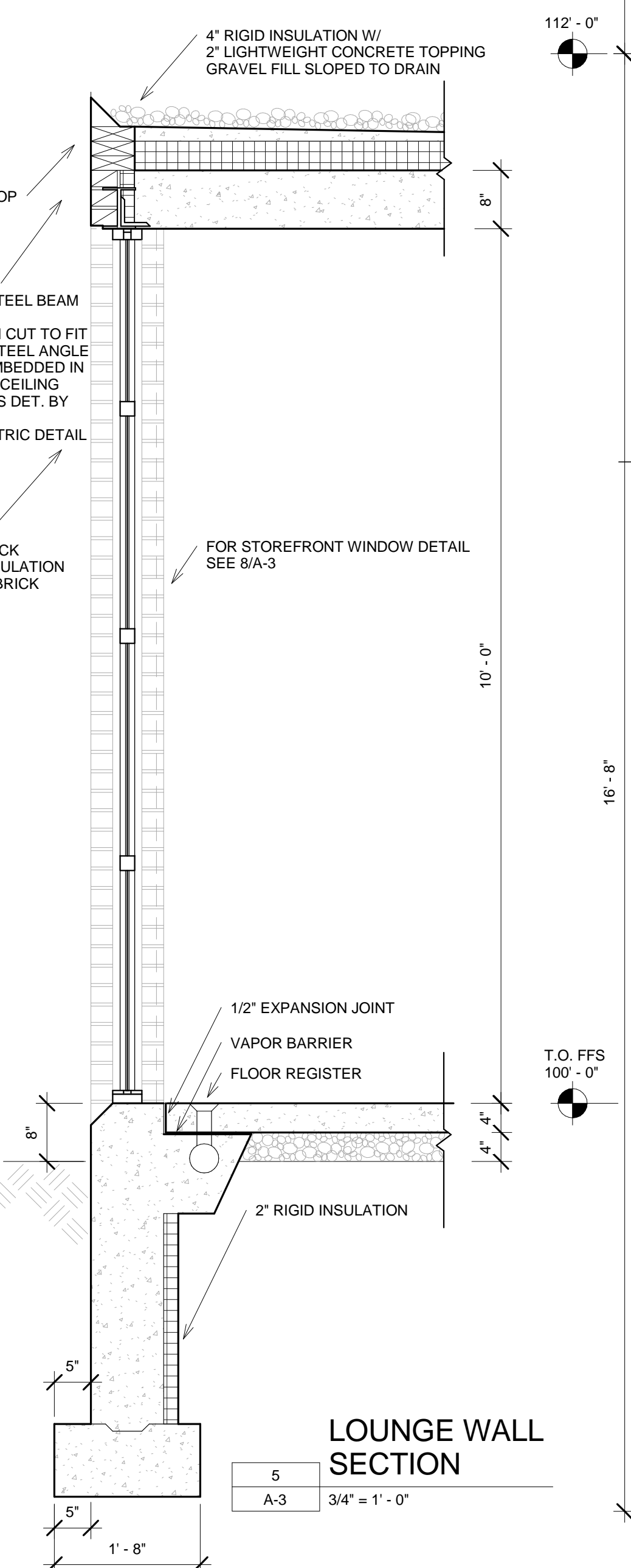
**PRECAST
FOUNDATION WALL
DETAIL**

2
A-3
1" = 1'-0"



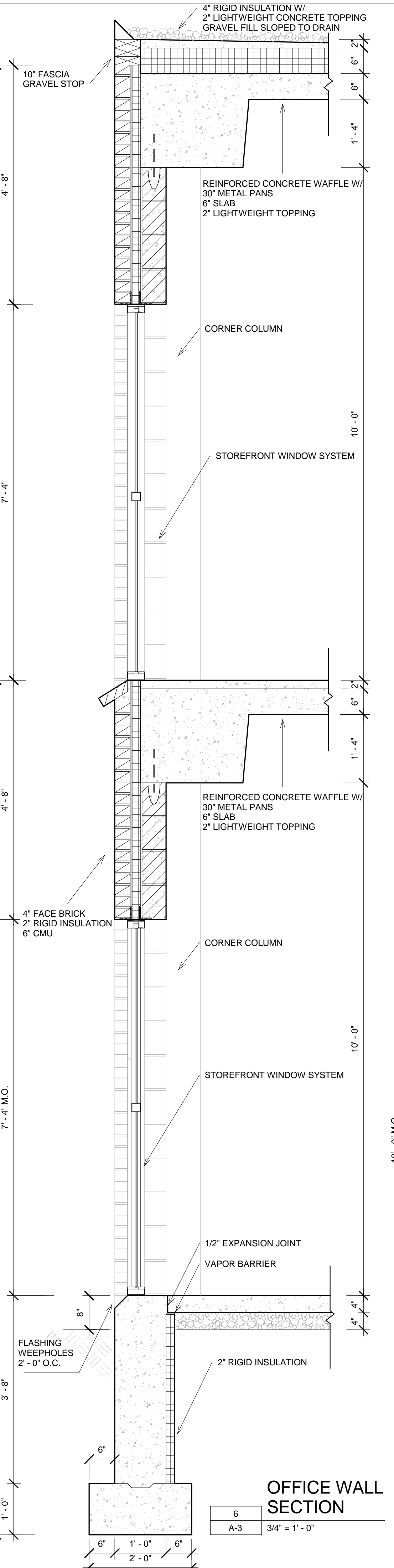
**TOILET WALL
SECTION**

4
A-3
3/4" = 1'-0"



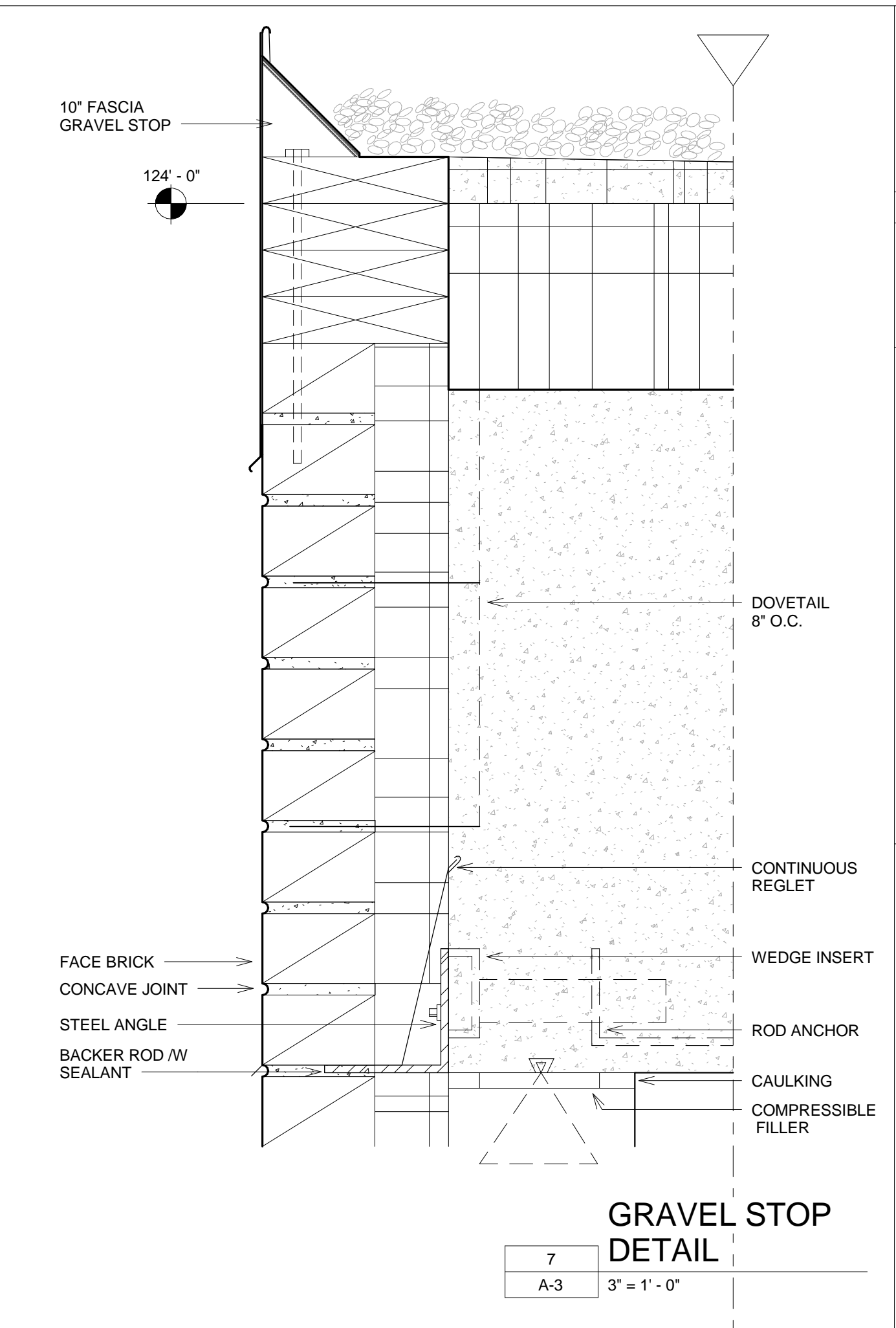
**LOUNGE WALL
SECTION**

5
A-3
3/4" = 1'-0"



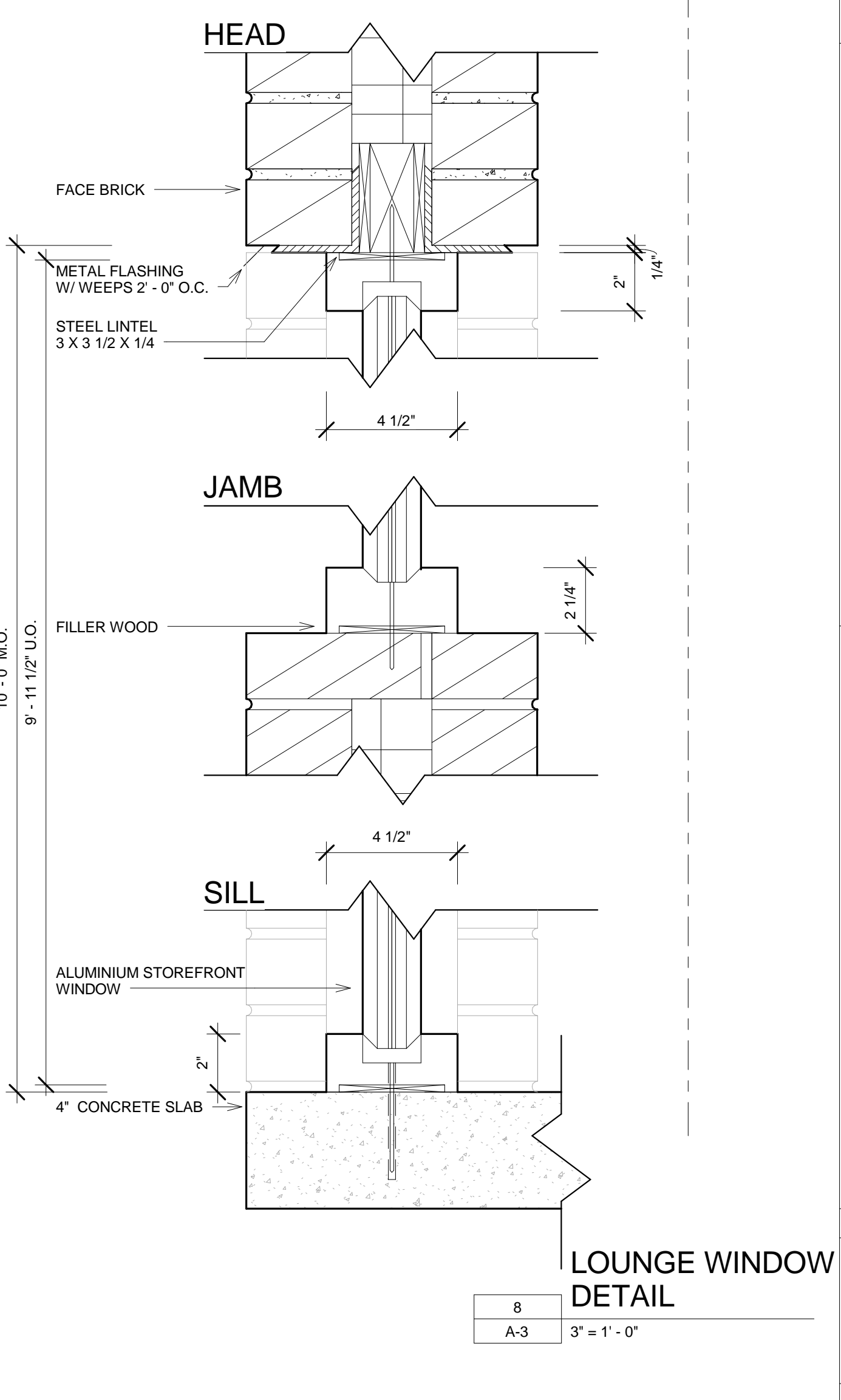
**OFFICE WALL
SECTION**

6
A-3
3/4" = 1'-0"



**GRAVEL STOP
DETAIL**

7
A-3
3" = 1'-0"



**LOUNGE WINDOW
DETAIL**

8
A-3
3" = 1'-0"

NO.	REVISION & DATE
1	11/8/13

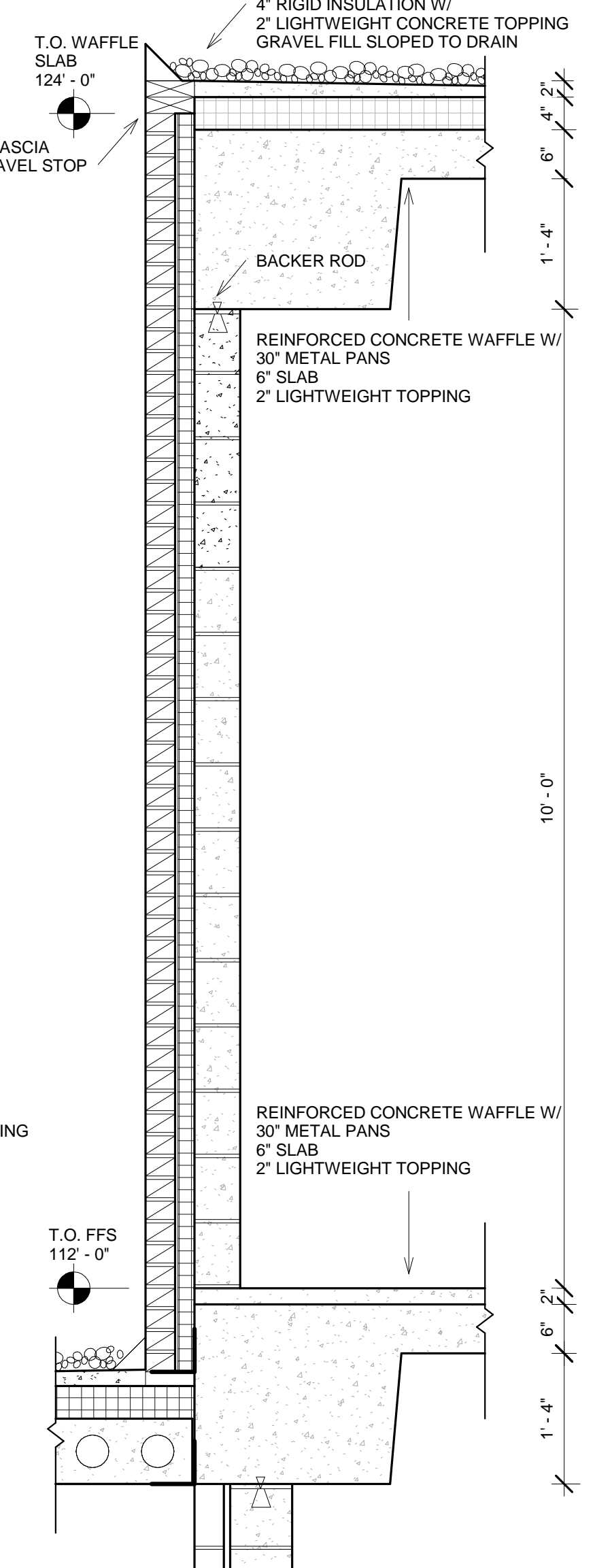
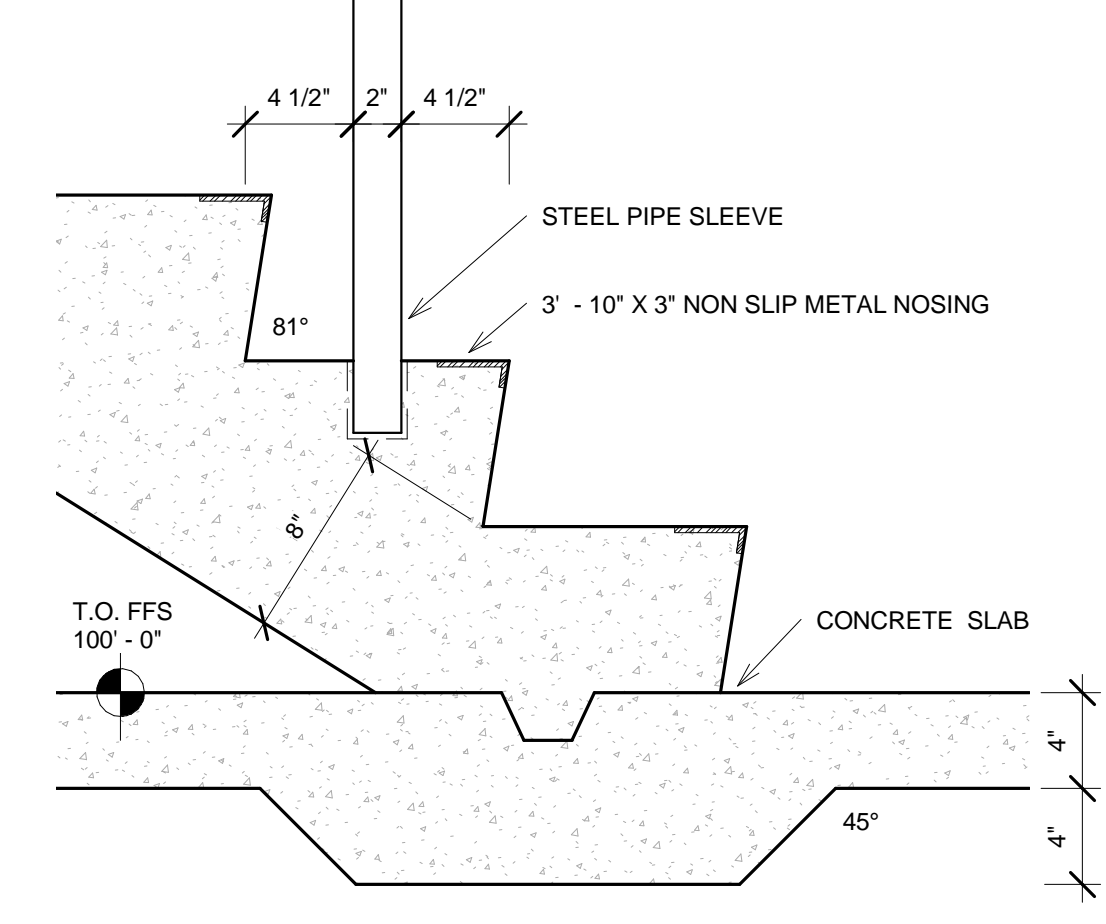
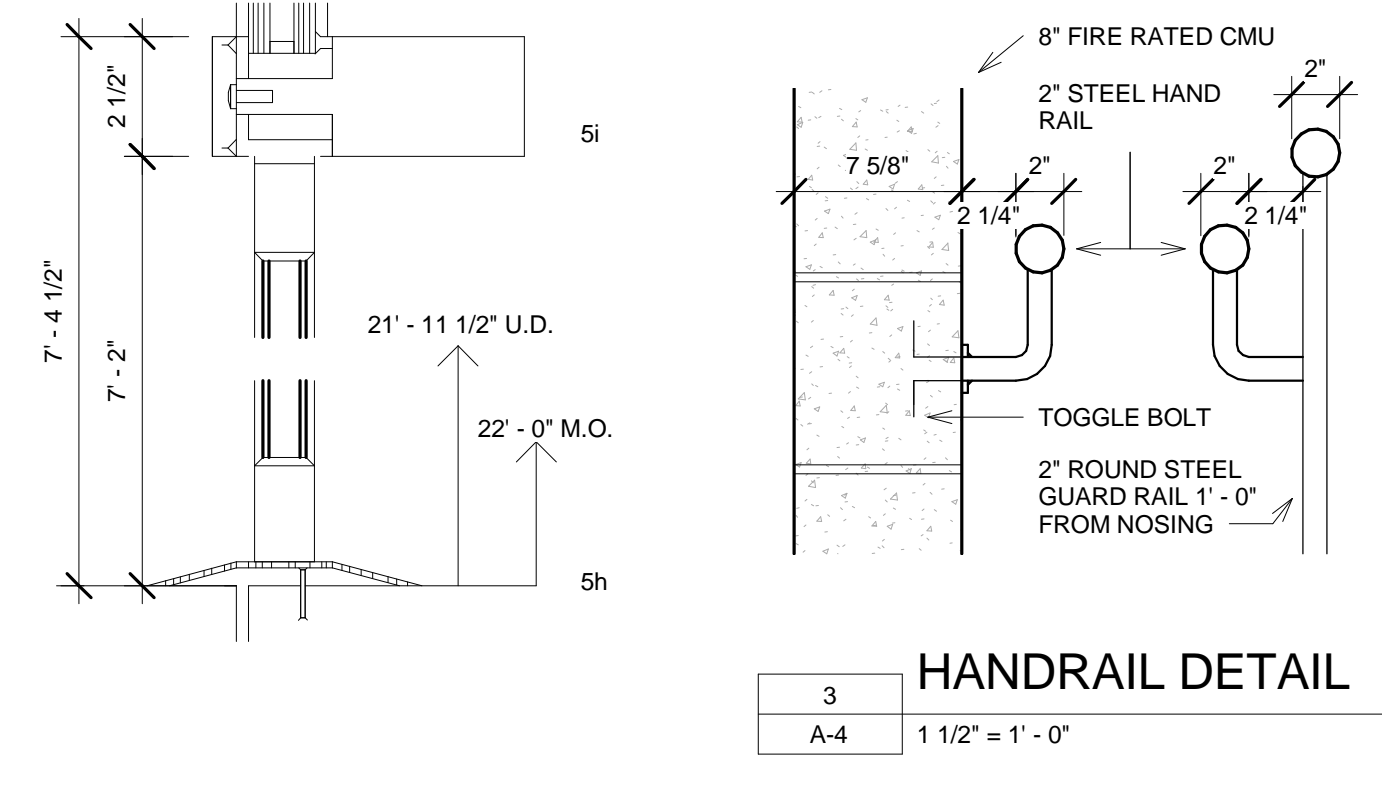
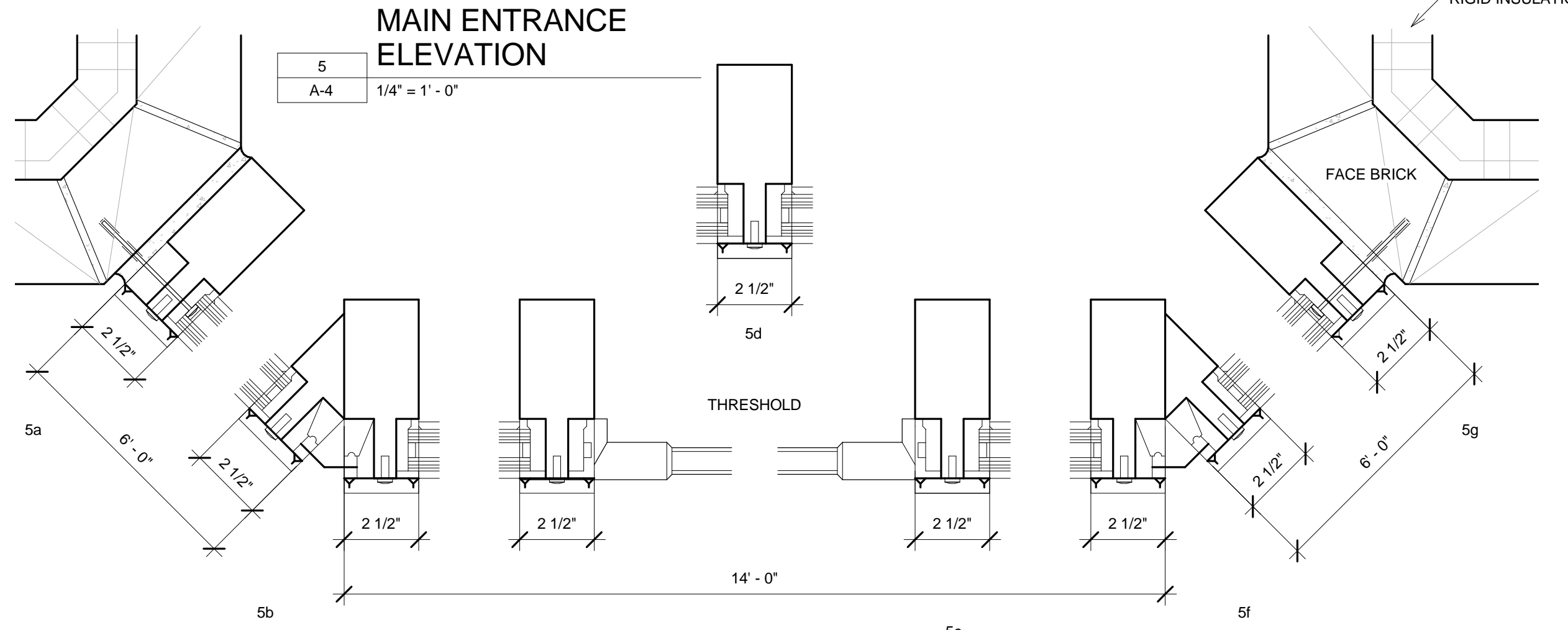
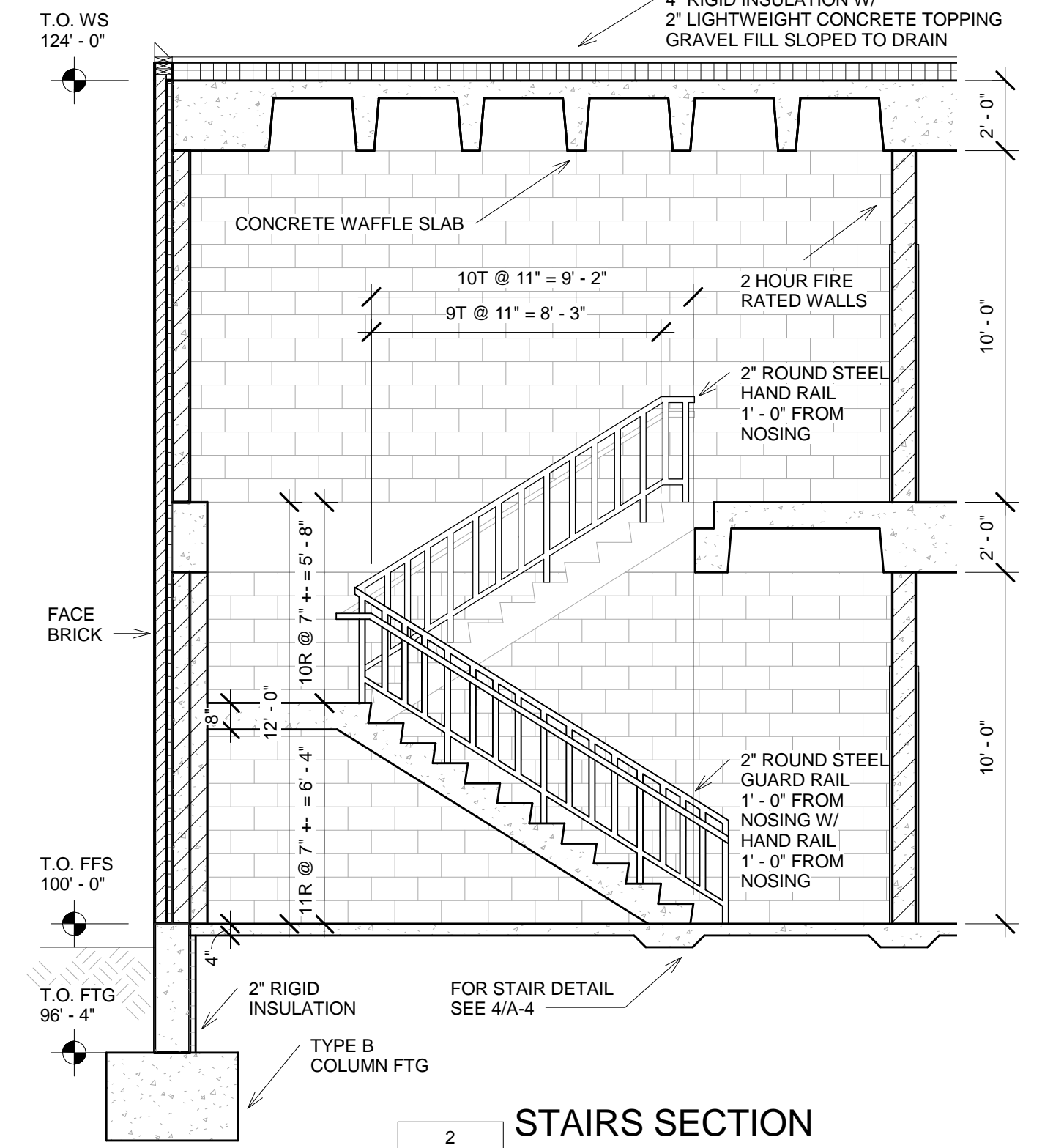
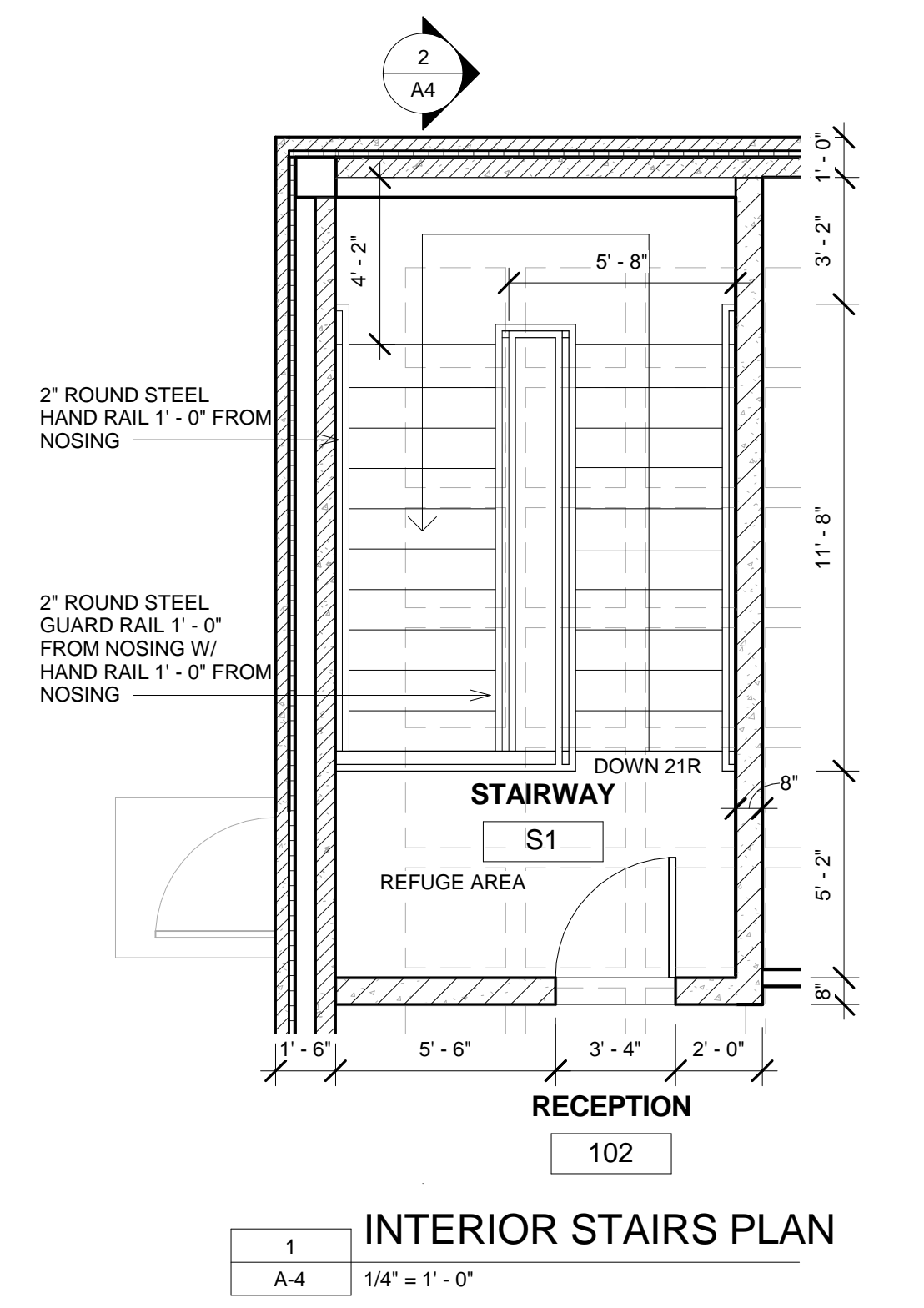
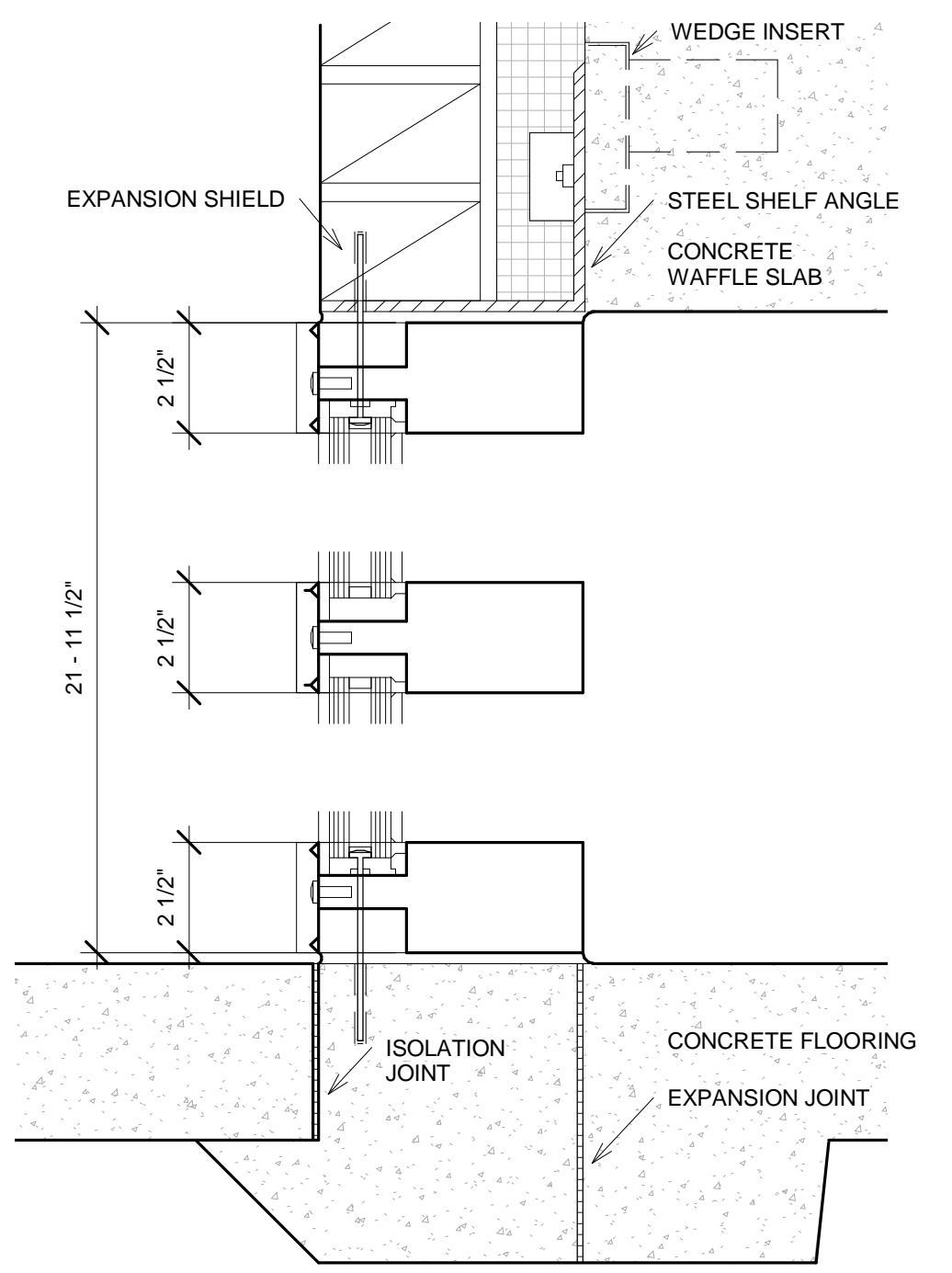
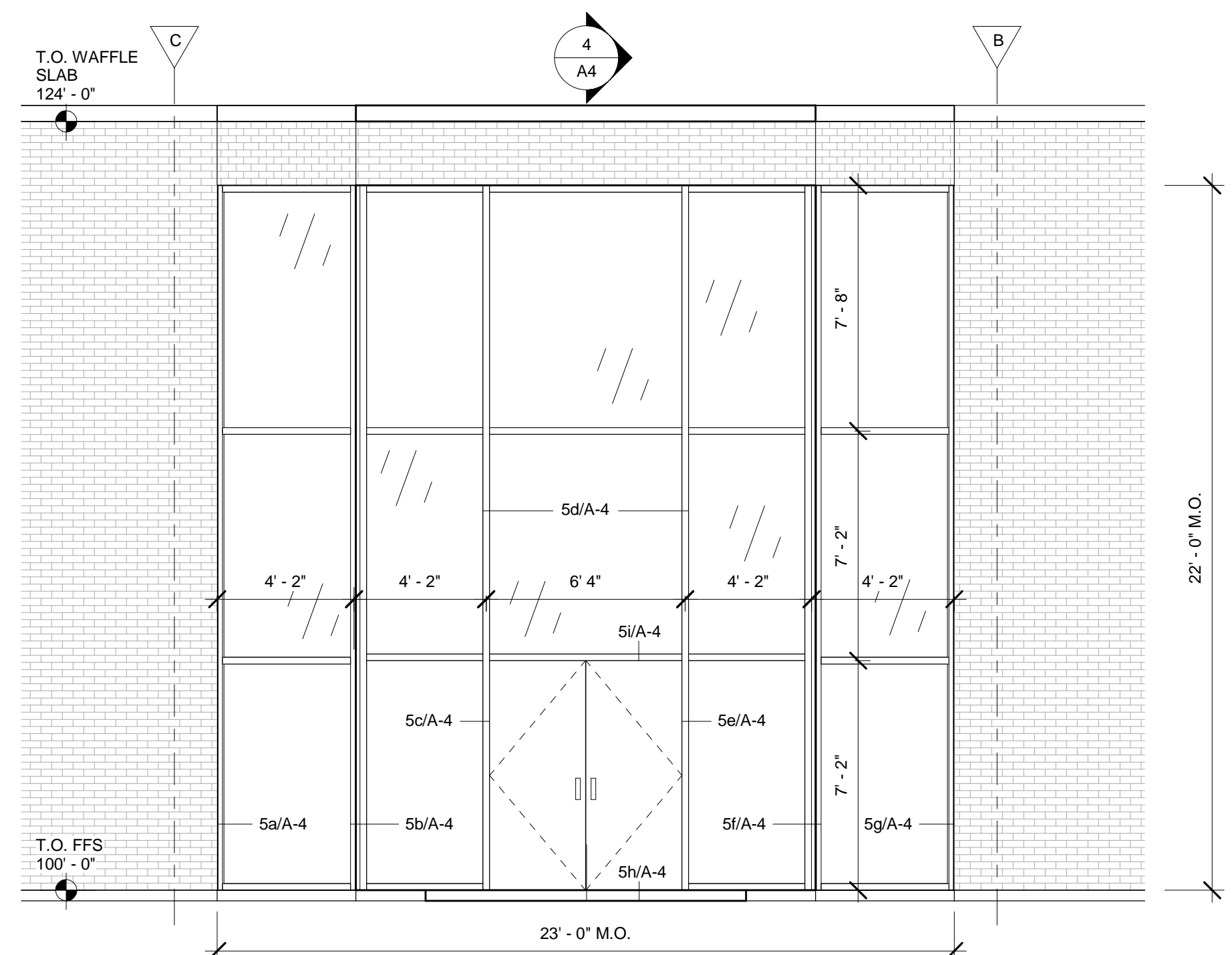
SHEET TITLE	ISOMETRIC DETAILS WALL SECTION GRAVEL STOP LOUNGE WINDOW DETAIL
DATE	11/8/13
SET NO.	1

RYAN KINPORTS	MR. NORM LACH	JOB NO. 02
DRAWN BY: RK	CHECKED BY: NL	

SOUTHERN ILLINOIS PRECAST CONCRETE INSTITUTE	SPRINGFIELD, IL 62712	SIPCI
---	------------------------------	--------------

SCHOOL OF ARCHITECTURE	SOUTHERN ILLINOIS UNIVERSITY
BUILDING TECHNOLOGY II	ARC 341 SECTION 002

SHEET NO.	A-3
OF 8 SHEETS	



5
A-4
1/4" = 1'-0"

2
A-4
1/4" = 1'-0"

6
A-4
3" = 1'-0"

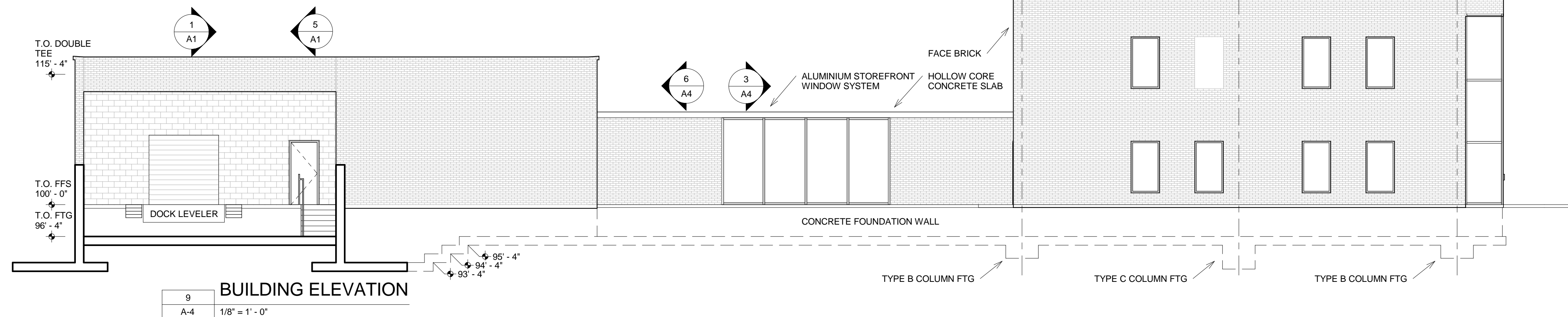
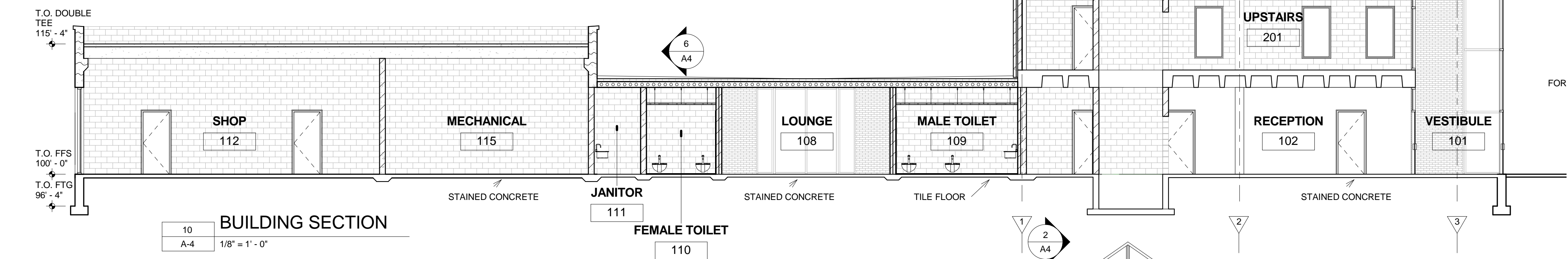
3
A-4
1 1/2" = 1'-0"

4
A-4
1 1/2" = 1'-0"

10
A-4
1/8" = 1'-0"

7
A-4
3/4" = 1'-0"

8
A-4
3/4" = 1'-0"



FOR ISOMETRIC DETAIL SEE 1/A-3

LOUNGE & SHOP ROOF DETAIL

OFFICE & LOUNGE ROOF DETAIL

NO.	REVISION & DATE
1	12/6/13

SHEET TITLE	DATE	NO.
INTERIOR STAIRWAY ENLARGED ROOF DETAILS BUILDING ELEVATION BUILDING SECTION	12/6/13	1

RYAN KINPORTS	JOB NO.
MR. NORM LACH	02

SOUTHERN ILLINOIS PRECAST CONCRETE INSTITUTE SPRINGFIELD, IL 62712 SIPC1	CHECKED BY:
	NL

SCHOOL OF ARCHITECTURE SOUTHERN ILLINOIS UNIVERSITY BUILDING TECHNOLOGY II ARC 341 SECTION 002	DRAWN BY:
	RK

SHEET NO.	OF 8 SHEETS
A-4	